

# Arizona Critical Access Hospitals: Community Health Needs

This brief summarizes the Arizona Critical Access Hospitals (AzCAHs) community health needs identified in the Community Health Needs Assessment (CHNA) report. Under the Patient Protection and Affordable Care Act (PPACA), all 501(c)(3) hospitals are required to demonstrate they provide a community benefit and complete a CHNA every three years. In the CHNA, AzCAHs are asked to describe community health needs and select 3-5 needs to prioritize to address in their implementation plan. This summary was completed in 2021.

## Participating AzCAHs include:

### North

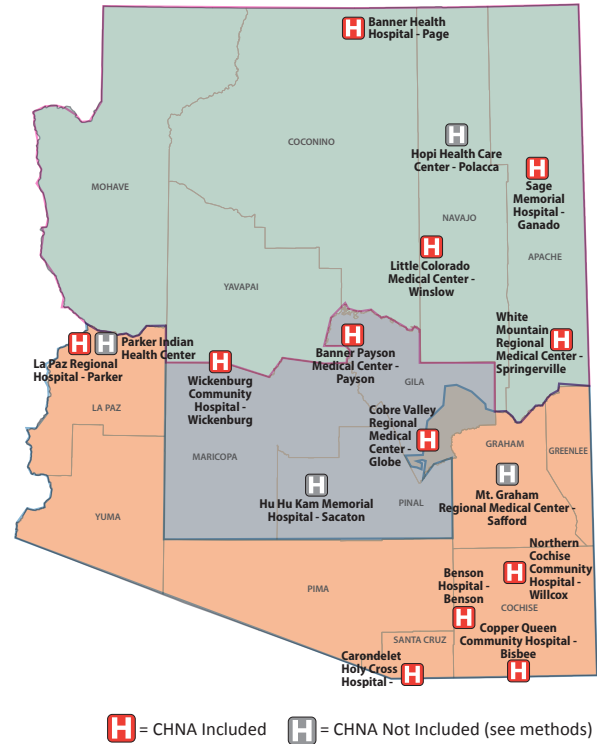
- Banner Page Hospital
- Little Colorado Medical Center
- Sage Memorial Hospital
- White Mountain Regional Medical Center
- Wickenburg Community Hospital

### Central

- Banner Payson Medical Center
- Cobre Valley Regional Medical Center

### South

- Benson Hospital
- Carondelet Holy Cross Hospital
- Copper Queen Community Hospital
- La Paz Regional Hospital
- Northern Cochise Community Hospital



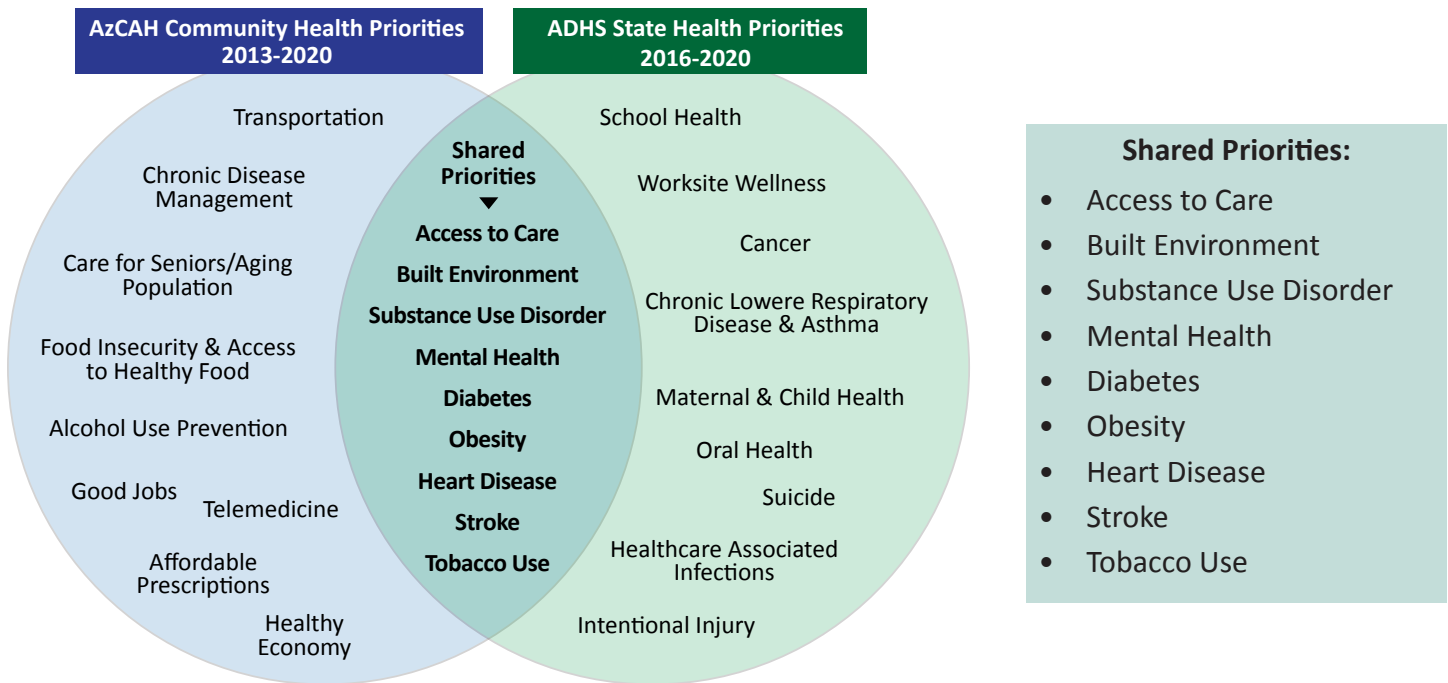
## Priorities identified by AzCAHs in their most recent CHNA:

Northern AzCAH Priorities	
<b>Banner Page Hospital (2019)</b> <ul style="list-style-type: none"> <li>• Access to care</li> <li>• Chronic disease management</li> <li>• Behavioral health</li> </ul>	<b>White Mountain Regional Medical Center (2018)</b> <ul style="list-style-type: none"> <li>• Access to community resources</li> <li>• Mental health services: depression, anxiety, substance abuse, suicide prevention</li> <li>• Allergies &amp; asthma</li> </ul>
<b>Little Colorado Medical Center (2020)</b> <ul style="list-style-type: none"> <li>• Heart disease, substance use, diabetes &amp; affordable health care</li> <li>• Employment, mental health services, &amp; affordable housing</li> </ul>	<b>Wickenburg Community Hospital (2019)</b> <ul style="list-style-type: none"> <li>• Good jobs &amp; a health economy, low crime &amp; safe neighborhoods, affordable housing</li> <li>• Substance use, depression, &amp; alcohol use</li> </ul>
<b>Sage Memorial Hospital (2019)</b> <ul style="list-style-type: none"> <li>• Behavioral health &amp; substance use treatment</li> <li>• Pediatric care</li> <li>• Obesity prevention</li> </ul>	
Central AzCAH Priorities	
<b>Banner Payson Medical Center (2020)</b> <ul style="list-style-type: none"> <li>• Access to care</li> <li>• Chronic disease management</li> <li>• Behavioral health</li> </ul>	<b>Cobre Valley Regional Medical Center (2019)</b> <ul style="list-style-type: none"> <li>• Immediate care services (access to urgent care)</li> <li>• Build a walking path</li> <li>• Increase access to preventative services</li> </ul>

## Southern AzCAH Priorities

<b>Benson Hospital (2017)</b> <ul style="list-style-type: none"> <li>• Access to care</li> <li>• Good jobs &amp; a healthy economy</li> <li>• Health eating, obesity and diabetes</li> </ul>	<b>Carondelet Holy Cross Hospital (2018)</b> <ul style="list-style-type: none"> <li>• Mental health</li> <li>• Economic insecurity, overweight &amp; obesity, access to health care</li> <li>• Diabetes, birth indicators</li> </ul>
<b>Copper Queen Community Hospital (2020)</b> <ul style="list-style-type: none"> <li>• Good jobs &amp; a healthy economy</li> <li>• Mental health &amp; alcohol/substance abuse</li> <li>• Healthy eating, obesity and diabetes</li> </ul>	<b>La Paz Regional Hospital (2017)</b> <ul style="list-style-type: none"> <li>• Increased access to primary care services</li> <li>• Increased access &amp; expansion of veteran's services</li> <li>• Expansion of telemedicine and behavioral health services</li> </ul>
<b>Northern Cochise Community Hospital (2017)</b> <ul style="list-style-type: none"> <li>• Access to care</li> <li>• Good jobs &amp; a healthy economy</li> <li>• Health eating, obesity and diabetes</li> </ul>	

The Arizona Department of Health Services also completes a statewide health assessment and develops a health improvement plan (AZHIP). The AzHIP identified from 2016-2020 is compared to the AzCAH CHNA priorities in the diagram below.



### New AzHIP 2021-2025

ADHS recently completed an updates AzHIP for 2021-2025. This plan focuses on a “smaller number of priorities that underlie multiple health issues and disparities.”

The AzHIP offers multiple opportunities for AzCAHs to align with state and county efforts to meet community health needs. For example one strategy under the Social Determinants of Health priority is improved coordination between social service, medical, and other providers to improve access to affordable housing via referral to programs and other services.

### AzHIP Priorities 2021-2025



**Health Equity**



**Health in All Policies/Social Determinants of Health**



**Mental Well-Being**



**Rural & Urban Underserved Health**



## METHODS & DATA

This brief uses data collected from the AzCAH CHNA data to understand the shared health priorities between AzCAHs. The regions used to group the AzCAHs together are the state Medicaid program, the Arizona Health Care Cost Containment System (AHCCCS), regions. There are four AzCAHs who are not included in this analysis. Mt. Graham Regional Medical Center officially received CAH status in October, 2021 and will be included in the next analysis. Two Indian Health Service AzCAHs (Hopi Health Care Center, Parker Indian Medical Center) and one Tribal AzCAH (Hu Hu Kam Memorial Hospital) do not complete CHNAs under the ACA requirement. The AzCAH CHNAs are included in the references below. Because hyperlinks can become outdated, the AzCRH maintains copies of all CHNAs and can provide them on request. The AzCRH Flex program completes the CHNA review every two years.

### References

1. AHCCCS Complete CARE (ACC) Services Map. (2020). Retrieved from: [https://www.azahcccs.gov/AHCCCS/Downloads/Initiatives/ACC\\_Map\\_Web.pdf](https://www.azahcccs.gov/AHCCCS/Downloads/Initiatives/ACC_Map_Web.pdf)
2. Arizona Health Improvement Plan Summary Report 2021-2025. Arizona Department of Health Services. Retrieved from: <https://www.azdhs.gov/documents/operations/managing-excellence/azhip-2021-2025.pdf>
3. Arizona Health Improvement Plan. Arizona Department of Health Services. Retrieved from: <https://azdhs.gov/documents/operations/managing-excellence/azhip.pdf>
4. Banner Health Page Community Health Needs Assessment. (2019) Retrieved from: <https://www.bannerhealth.com/staying-well/community/health-needs-assessments-report>
5. Banner Health Payson Community Health Needs Assessment. (2020). Retrieved from: <https://www.bannerhealth.com/staying-well/community/health-needs-assessments-report>
6. Benson Hospital, Tucson Medical Center. (2017). Retrieved from: <https://www.tmcaz.com/bensonhealthcare/community/community-health-needs-assessment>
7. Carondelet Holy Cross Hospital. Community Health Needs Assessment. (2018). Retrieved from: [https://www.carondelet.org/docs/librariesprovidercarondelet/default-document-library/holy-cross-hospital-2018-chna-report.pdf?sfvrsn=3ce1b582\\_2](https://www.carondelet.org/docs/librariesprovidercarondelet/default-document-library/holy-cross-hospital-2018-chna-report.pdf?sfvrsn=3ce1b582_2)
8. Cobre Valley Regional Medical Center Community Health Needs Assessment. (2019). Retrieved from: <https://cvrmc.org/patient-resources/reports-policy-notice/>
9. Copper Queen Community Hospital Community Health Needs Assessment. (2020). Retrieved from: [https://cqch.org/wp-content/uploads/2020/06/CQCH-2019-CHIP.CHNA\\_.pdf](https://cqch.org/wp-content/uploads/2020/06/CQCH-2019-CHIP.CHNA_.pdf)
10. Little Colorado Medical Center Community Health Needs Assessment. (2020). Retrieved from: <https://www.lcmcmh.com/file/94894c45-62d1-4538-b108-913e2cd891a6>
11. La Paz Regional Hospital Community Health Needs Assessment. (2017). Retrieved from: [http://www.lapazhospital.org/docs/LPRH\\_CHNA\\_2017-2019.pdf](http://www.lapazhospital.org/docs/LPRH_CHNA_2017-2019.pdf)
12. Northern Cochise Community Hospital Community Health Needs Assessment. (2017). Retrieved from: <https://www.cochise.az.gov/DocumentCenter/View/991/2017-Community-Health-Assessment-Report-PDF>
13. Sage Memorial Hospital Community Health Needs Assessment. (2019). Retrieved from: <https://sagememorial.com/wp-content/uploads/2021/05/2019-FINAL-Community-Health-Needs-Assessment-and-Implementation-Plan.pdf>
14. Wickenburg Community Hospital Community Health Needs Assessment. (2019). Retrieved from: <https://www.wickhosp.com/wp-content/uploads/2020/06/2019-CHNA-Report.pdf>
15. White Mountain Regional Medical Center Community Health Needs Assessment. (2018). Retrieved from: [http://www.whitemountainhealthdistrict.org/download/i/mark\\_dl/u/4011935081/4636791500/Apache%20County%20Community%20Health%20Needs%20Assessment%202018.pdf](http://www.whitemountainhealthdistrict.org/download/i/mark_dl/u/4011935081/4636791500/Apache%20County%20Community%20Health%20Needs%20Assessment%202018.pdf)