



# SUMMIT HEALTHCARE ASSOCIATION and the C.I.R.C.L.E Consortium

## HRSA RCORP OUD/SUD Grant (Rural Communities Opioid Response Program)


---

Consortium for Integrated Recovery Community Leveraging Experience

9/1/2022 through 8/31/2025

Presented by: Susy Salvo-Wendt, MSH

Chris Flake, PA, MBA



This initiative is made possible through the generous support of the U.S. Department of Health and Human Services' Health Resources and Services Administration (HRSA), contributing to a total award of \$1 million

The content presented is the responsibility of the authors and does not necessarily reflect the official stance or endorsement of HRSA, HHS, or the U.S. Government

For further details, we invite you to visit [HRSA.gov](https://www.hrsa.gov)

---

# CIRCLE MEMBERS

- AZ at Work
- AZ Blue Cross Blue Shield
- AZ Complete Health
- Apache Alliance to End Homelessness
- Behavioral Wellness Clinic
- Care1st Health Plan
- Change Point Integrated Care
- City of Pinetop/Lakeside
- City of Show Low
- City of Snowflake
- City of Taylor
- Community Bridges
- Community Council on Mental Health
- Community Medical Services
- County Attorney's Office
- County Jail and Sheriff's Office
- Emergency Department
- Etransx
- Health Department
- Hope Inc
- Navajo and Apache Alliance to End Homelessness
- Navajo County
- Nexus Coalition on Drug Prevention
- Northland Pioneer College
- Northeast AZ Veterans Workforce
- Opioid & Harm Reduction and Death Review Office
- Pain Management Clinic
- Probation and Parole Department
- Re-Center – Pinetop
- Recovery Works
- Summit Healthcare Association
- Timber Mesa Fire and Medical
- Nursing and Telehealth Dept.

# Partners





# Holistic Community Model of Care



Health  
Education  
and Training

# Emergency Department Planning and Implementation

Goals

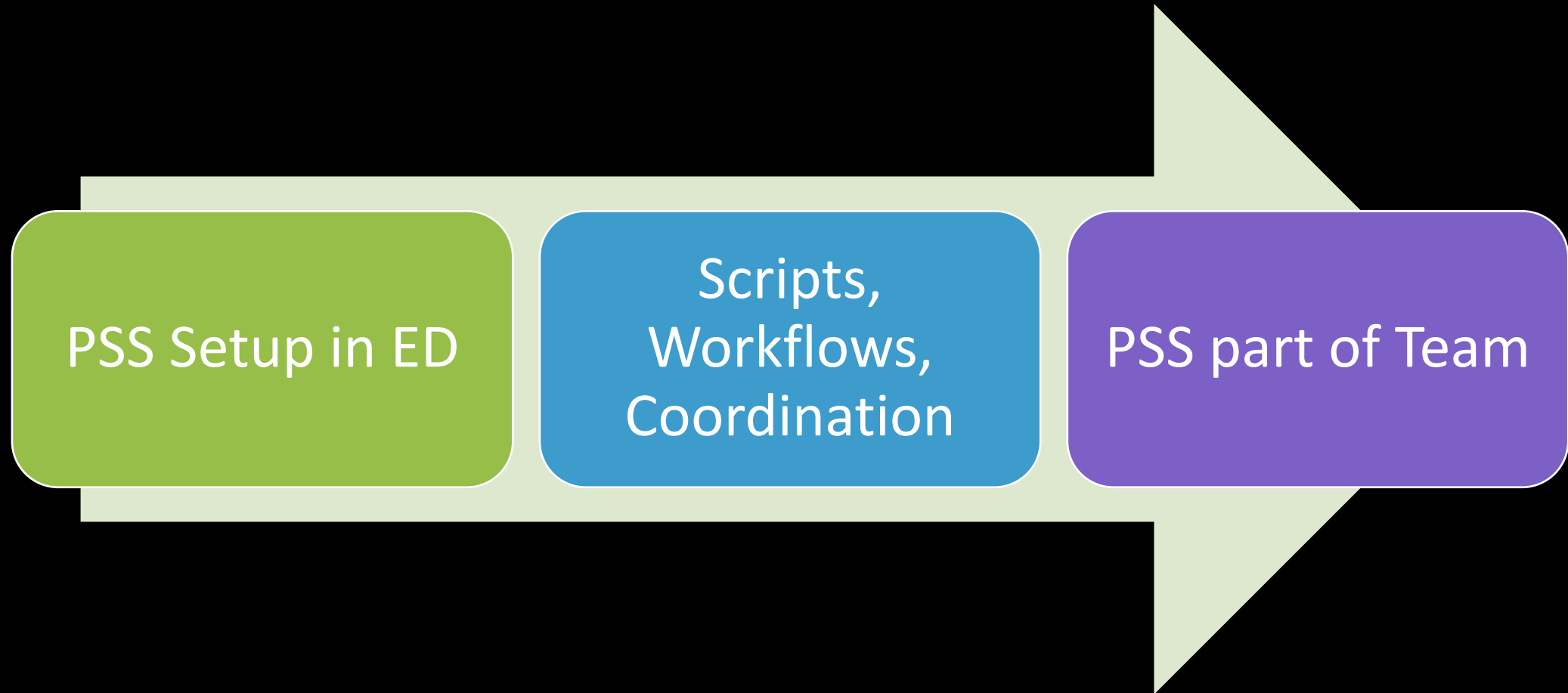


```
graph TD; A[Goals] --> B[Benefits]; B --> C[Buy-in];
```

Benefits

Buy-in

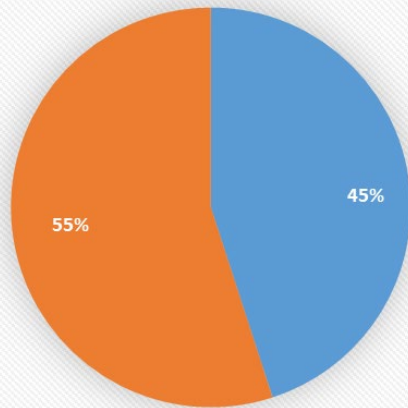
# Emergency Department Planning and Implementation



# RESULTS: March 7, 2023 – April 30, 2023

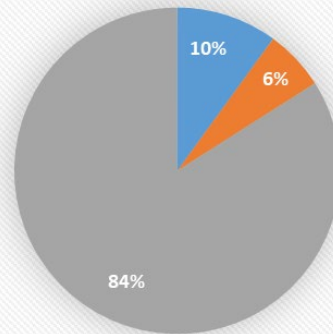
80 Referrals over 49 Days = 1.6 referrals per day

## ED Visit Results



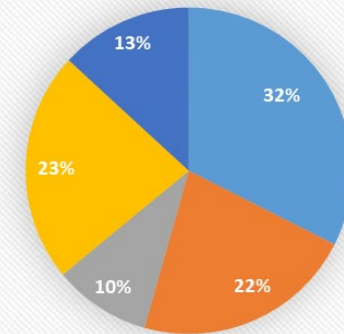
Male (36) Female (44)

## Placement



Referred to Treatment (8)  
Completed intake at Health Home (5)  
No Treatment Program

## Follow-Up

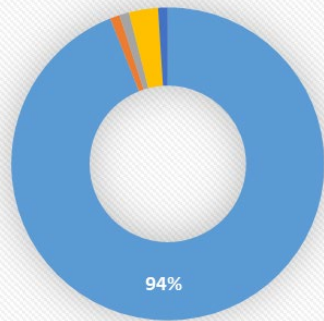


24 Hour Follow-Up (30) 7 Day Follow-Up (20)  
30 Day Follow-Up (9) No Phone (21)  
Homeless (12)



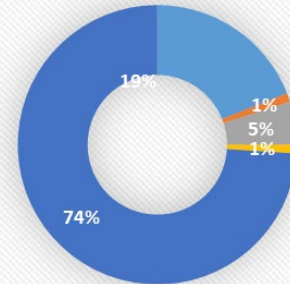
# RESULTS: March 7, 2023 – April 30, 2023

## ED Visit Results



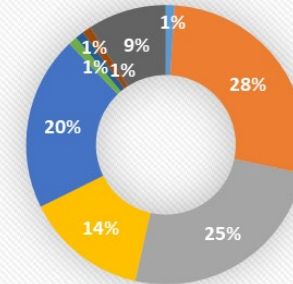
■ SHRMC ED (75) ■ Re-Center (1) ■ Changepoint (1)  
■ Law Enforcement (2) ■ Bread of Life (1)

## Placement



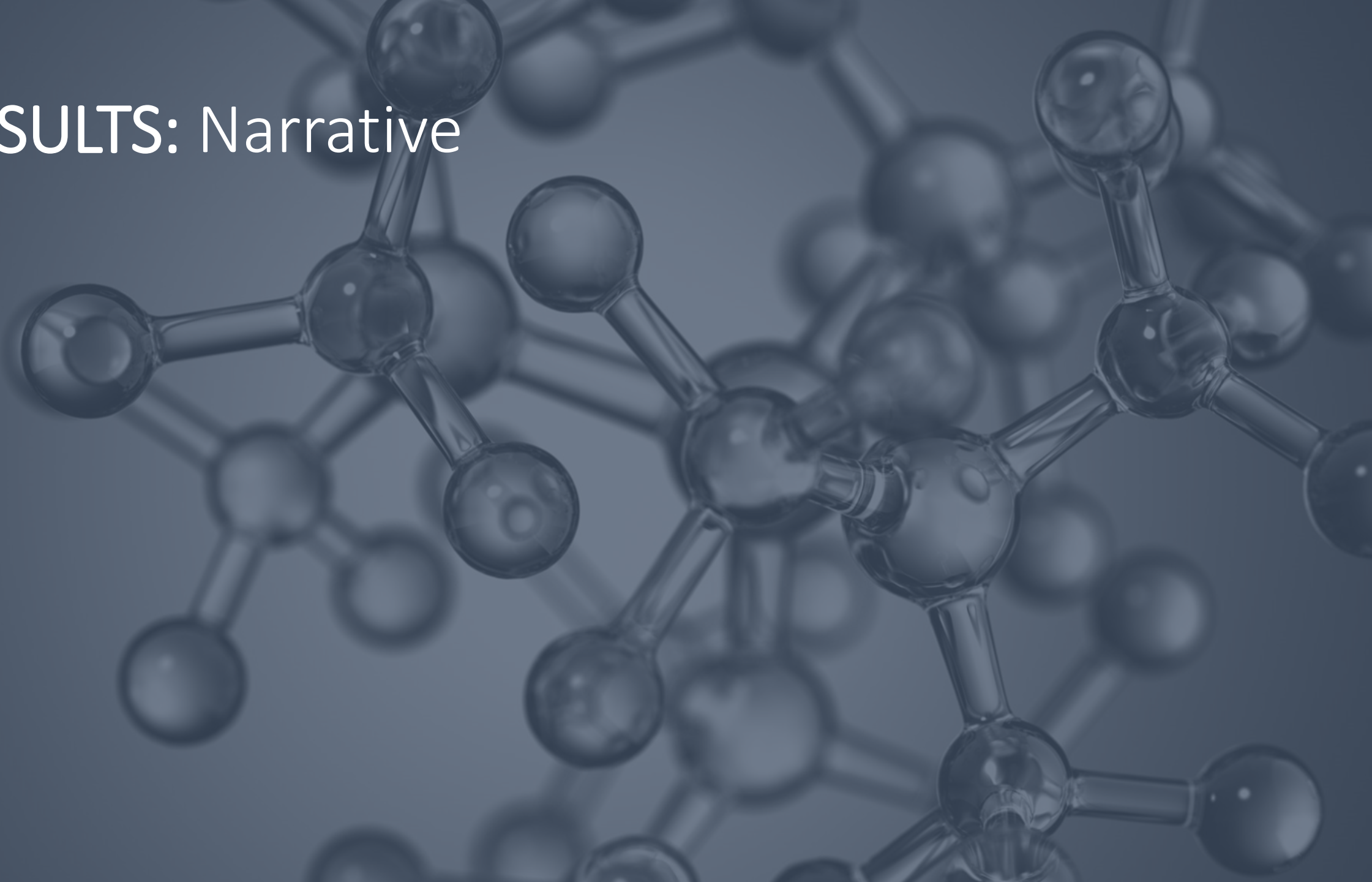
■ Changepoint (15) ■ Mountain Park (1)  
■ Rainbow Treatment (4) ■ Aurora (1)  
■ None/Not Identified (59)

## Follow-Up



■ AzCH (1) ■ Health Choice (21) ■ Care 1st (20)  
■ American Indian (11) ■ No Insurance (16) ■ United Healthcare (1)  
■ Mercy Care (1) ■ VA (1) ■ Private (7)

# RESULTS: Narrative





# Benefits to Hospital

---

- Naloxone Distribution – Summit Healthcare Association wide (.5% rebate from AHCCCS for OUD/SUD/BH patient consults)
- Reduced time to discharge of OUD/SUD/BH patients
- Reduction of ER visits
- Gathering DATA (Asset)
- Goodwill with Community – seeing Summit in a different light
- Referrals to Community Providers
- Strategic Planning

# Challenges/Roadblocks

- Stigma within Hospital
- Stigma with Community
- Gaps in Resources
- Data Gathering
- HRSA designated Provider Shortage and Medically Underserved
- Transportation
- Poverty
- Housing





# Next Steps

---

Go Live with the Well-Being Platform

---

University of Arizona Collaboration on PeerWORKS, Data Evaluation and Publications/Papers

---

Implementing Peer Supports on L&D and in the rest of the hospital

---

Implementing Peer Supports in the Clinics

---

Develop Reimbursement Model of value-based care for the wrap around services

---

Marketing Campaign regarding Program, Native Radio Stations, Social Media, translation in appropriate languages

---

Medical Assisted Treatment (Provider buy-in) guidelines

---

STI guidelines

---

Develop partnerships within the tribal communities



# Future

---

Develop a comprehensive plan to focus on the Maternal/Baby Subpopulation wellness

---

Become a Centers for Medicare and Medicaid Demonstration Entity to replicate and scale our program for national adoption and implementation

---

Potential Partnership with Hope Inc and Etransx to expand our program to other state

---

Become the experts in OUD/SUD Recovery Models and provide other entities solve their crisis with this patient population