

ARIZONA 50TH
ANNUAL RURAL
HEALTH CONFERENCE
FLAGSTAFF AZ.
JUNE 4-5, 2024

ENVIRONMENT AND HEALTH IN RURAL ARIZONA:
INITIATIVES AND OPPORTUNITIES

Amanda Aguirre, President & CEO
Regional Center for Border Health, Inc.



◦ **“Committed to improving the quality of life of the residents along the U.S.-Mexico Border and increasing the accessibility to quality training and affordable healthcare”**



San Luis Walk-In Clinic, Inc.

Integrated Behavioral Health Services

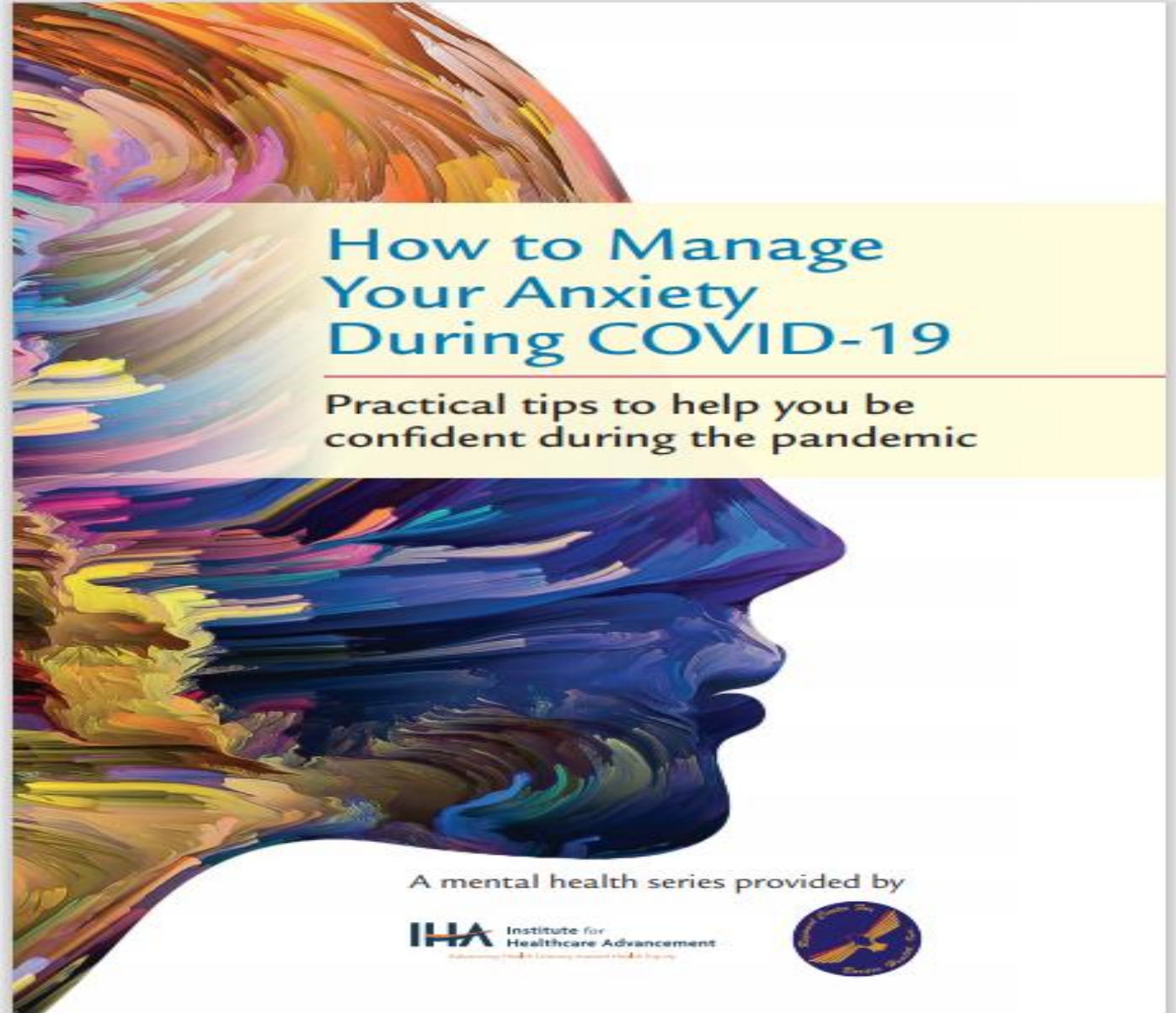


Patient-Centered Medical Home

“A Medical Home is defined as primary care that is accessible, continuous, comprehensive, family centered, coordinated, compassionate and culturally effective”.



Healthy Mind Healthy Body

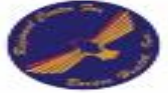


How to Manage Your Anxiety During COVID-19

Practical tips to help you be confident during the pandemic

A mental health series provided by

IHA Institute for Healthcare Advancement
Advancing Health Learning and Health Equity



Reaching out to Distressed Rural Communities and Increasing Access to Affordable Healthcare



Farmer's Market On Wheels





No Contaminate/Don't Trash La Frontera Illegal Dumping Prevention

FIGHT CLEAN

Clean borders start with you



Brought to you by The International Alliance No Contaminate, Don't trash la frontera, Illegal Dumping Prevention
EPA Region 9 Border 2012, BECC-COCEF and The Regional Center for Border Health, Inc. www.rcfbh.org

BEFORE



AFTER

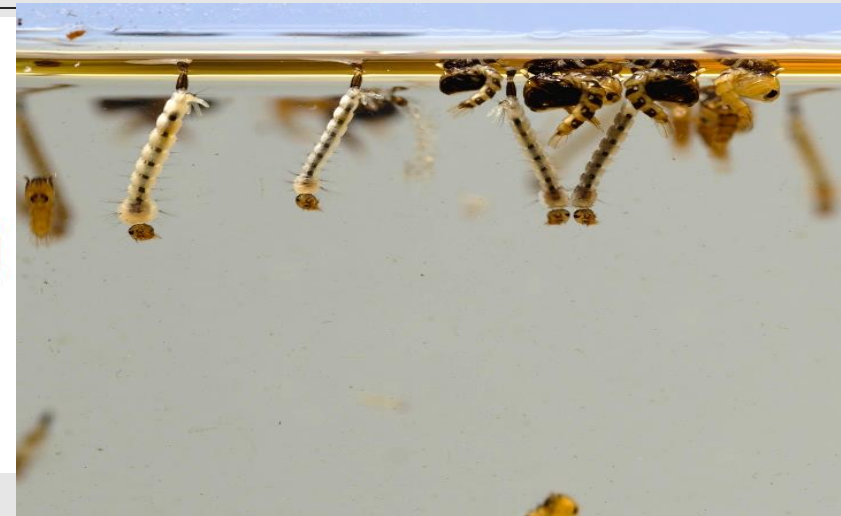
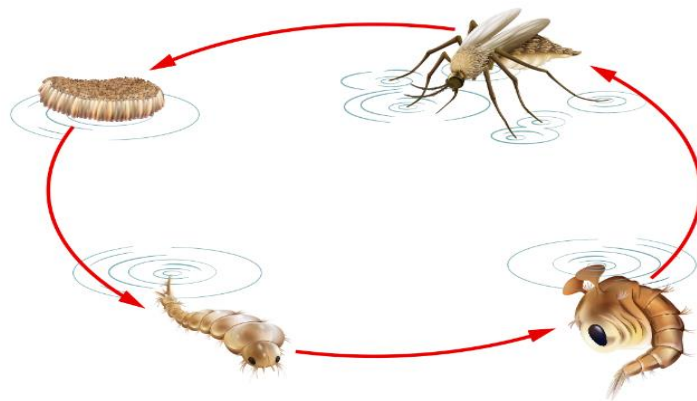




CLEAN UP CAMPAIGN
September 14-17, 2009
Orange Grove, Somerton, Az.

ORGANIZATIONS PARTICIPATING

- Regional Center for Border Health, Inc.
 - City of Somerton Public Works.
 - Bureau of Land Management.
- Arizona Department of Corrections.
- City of San Luis Police Department.
 - Yuma County Public Works.
 - Cocopah Indian Tribe.



Cómo controlar los mosquitos y enfermedades relacionadas

1. Drene o trate el agua estancada.



Los mosquitos transmiten la fiebre del Nilo Occidental (West Nilo Fever)

Mosquitos

Dawn H. Gouge, Shujuan Li,
Shakunthala Nair,
Maureen Brophy, Kathleen Walker,
Pedro Andrade-Sanchez.



THE UNIVERSITY OF ARIZONA

Agriculture, Life &
Veterinary Sciences &
Cooperative Extension

Brown dog ticks live around the home and lay eggs in cracks and crevices

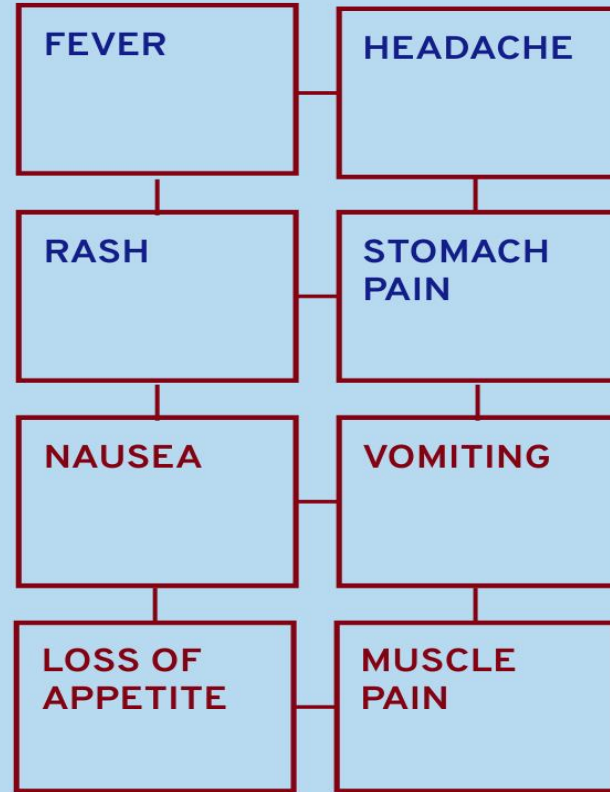
PREVENT TICKS: REMOVE UNUSED ITEMS AROUND THE HOME



Reducing tick breeding sites **inside** and **outside your home** is a great way to **reduce ticks** in your area. It stops female ticks from finding spots to lay thousands of eggs.

1. Discard old furniture, mattresses, & trash
2. Remove tall grasses, brush, & leaf litter around home
3. Stack wood neatly away from the home
4. Discourage unwelcome animals from entering your yard

IF YOU HAVE...



SEE YOUR DOCTOR IMMEDIATELY

RMSF can be **DEADLY** if left untreated, but is easily treated with antibiotics.



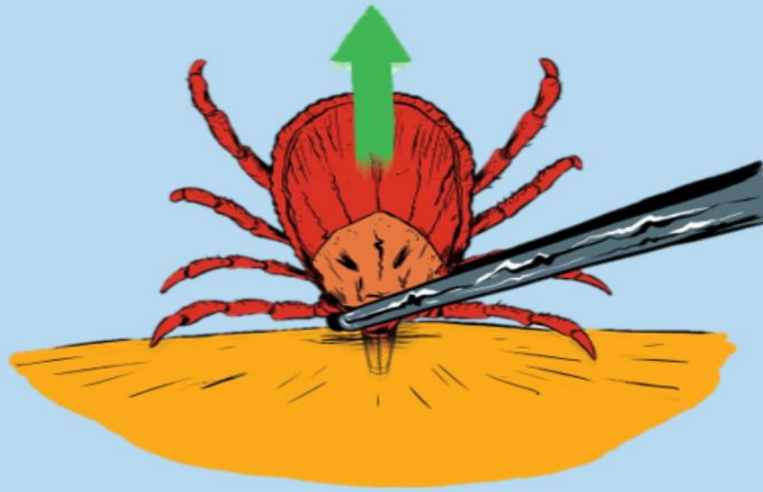
TICKS CAN BE PREVENTED





A BROWN DOG TICK BITE CAN TRANSMIT RMSF

- You **CAN** prevent tick bites
- You can **NOT** get RMSF from dogs
- You can **NOT** get RMSF from another person



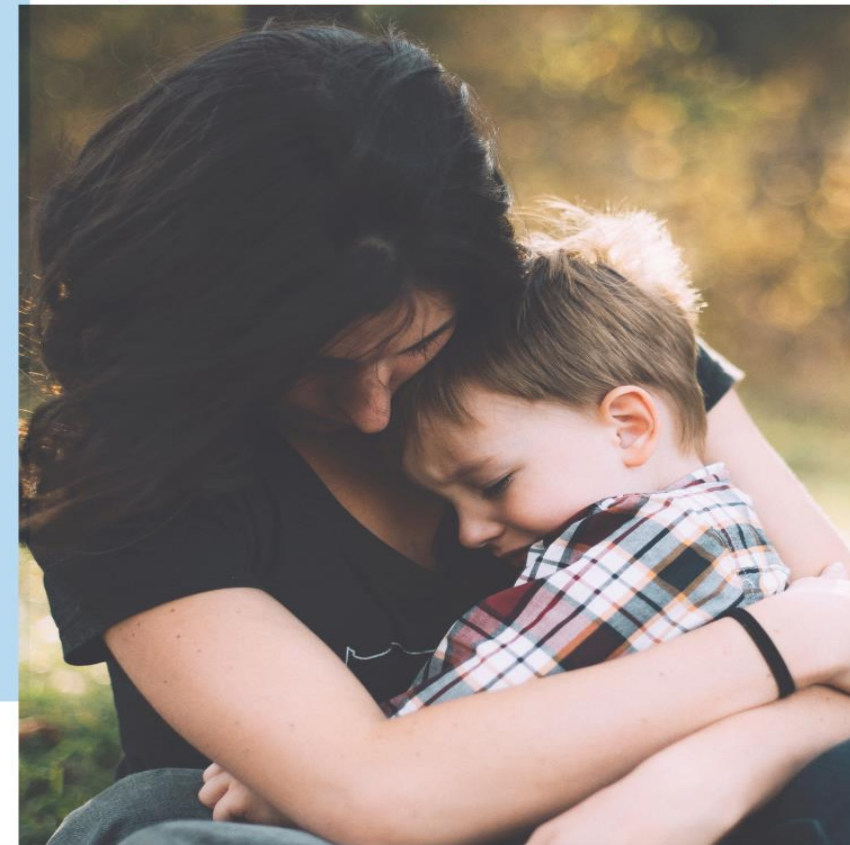
HOW TO REMOVE A TICK

1. Use tweezers to grasp tick close to your skin
2. Gently pull straight up
3. Discard tick- **DO NOT** crush it between fingers
4. Wash the bite with soap and water, or disinfect the area with rubbing alcohol

Protecting yourself and your family from

ROCKY MOUNTAIN SPOTTED FEVER

Spread by
the brown
dog tick



August 2020

THE UNIVERSITY OF ARIZONA
COLLEGE OF AGRICULTURE & LIFE SCIENCES

Entomology

M. Brophy

CLEAN UP CAMPAIGN

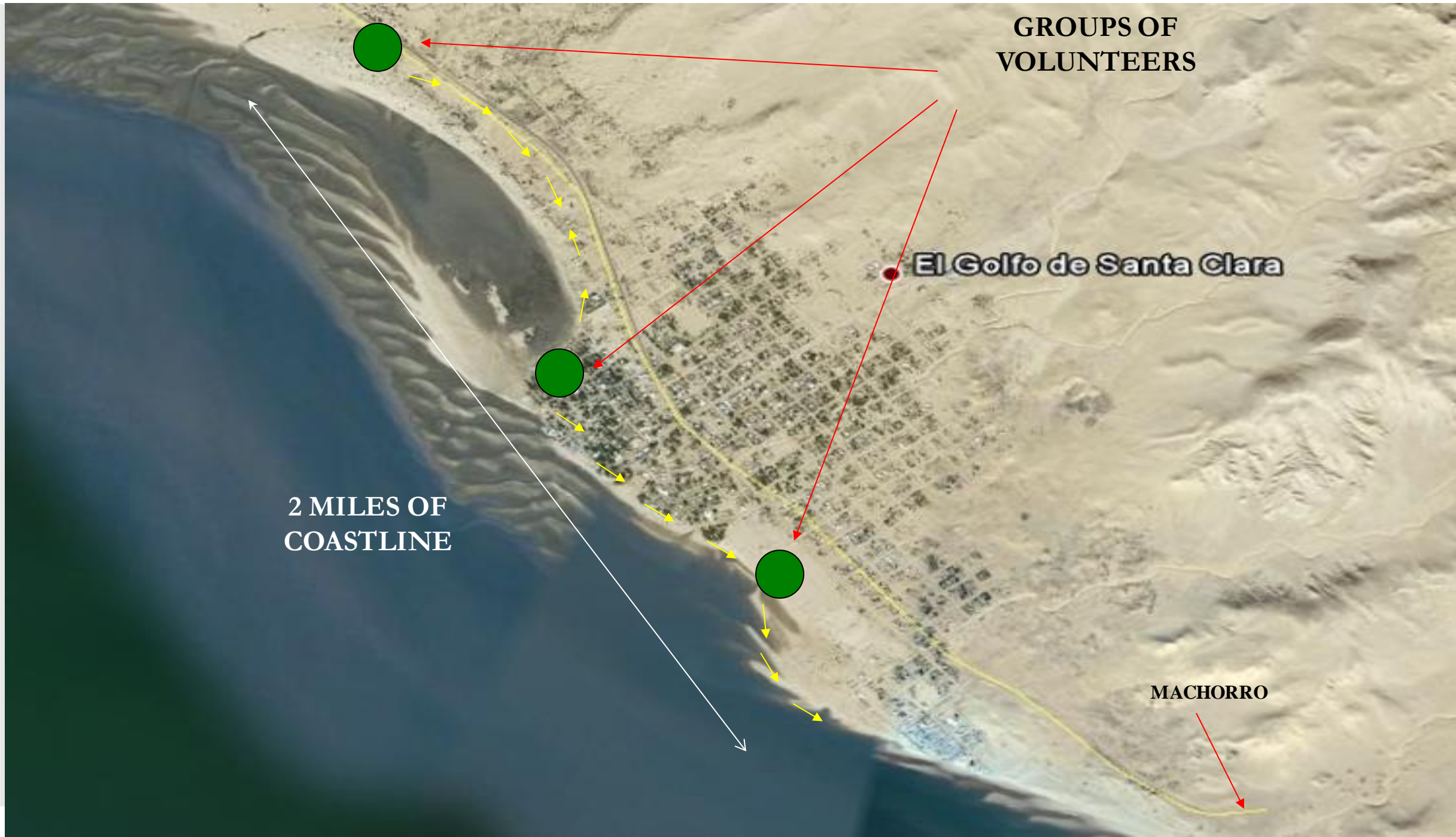
Golfo de Santa Clara, Son.

October 31, 2009









**GROUPS OF
VOLUNTEERS**

El Golfo de Santa Clara

**2 MILES OF
COASTLINE**

MACHORRO

ORGANIZATIONS

ARIZONA

- Regional Center for Border Health, Inc.
- EPA
- BECC/ COCEF
- City of San Luis, Az.
- City of Somerton, Az.
- Cocopah Indian Tribe
- Pasquinelli Produces Co.

SONORA

- 25 Ayuntamiento, SLRC
- CANACO
- CESUES
- MUSECAL
- Instituto Kino
- Pentatlón SLRC
- Manos que Ayudan
- 5 Amigos RV Park
- PRONATURA
- Desarrollo Urbano y Ecología
- Desarrollo Económico y Turismo.
- Protección Civil.

International Alliance

“No Contaminate / Don’t Trash La Frontera”



TOTAL PROGRAM ACCOMPLISHMENTS

CLEANUP CAMPAIGN	
Cleanup Campaigns	6
Tons of Trash / Tires	<u>176.68 Tons / 599 Tires</u>
EDUCATIONAL CAMPAIGN	
Train-The-Trainers	6
Trainers	133
Persons Reached	<u>11886</u>
VOLUNTEERS	
Volunteers	474
Organizations	68



INTERNATIONAL ALLIANCE
"NO CONTAMINE / DON'T TRASH
LA FRONTERA"

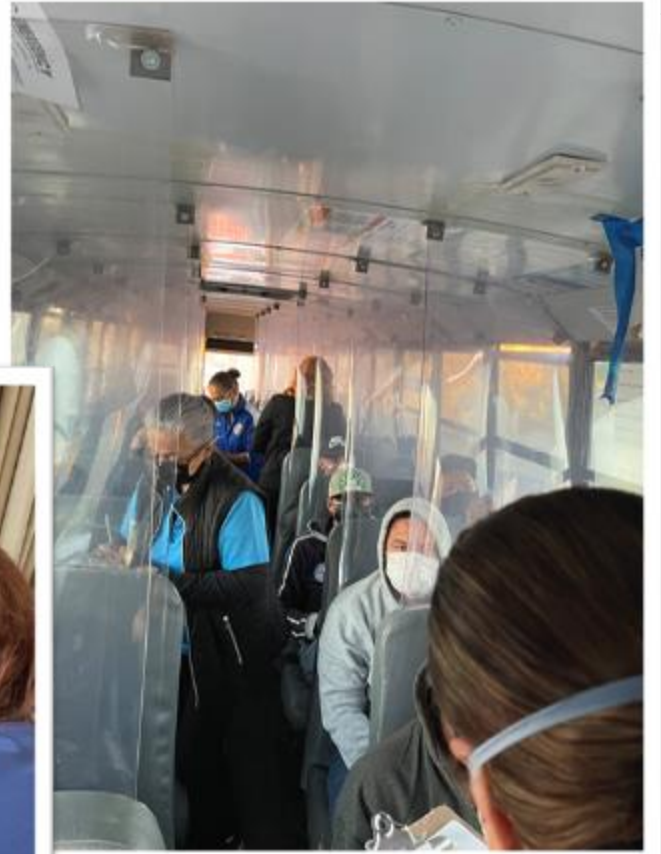
ACCOMPLISHMENTS

- 176.68 Tons of Trash were collected
- 599 Tires were collected
- 325 Volunteers participated
- 28 Organizations

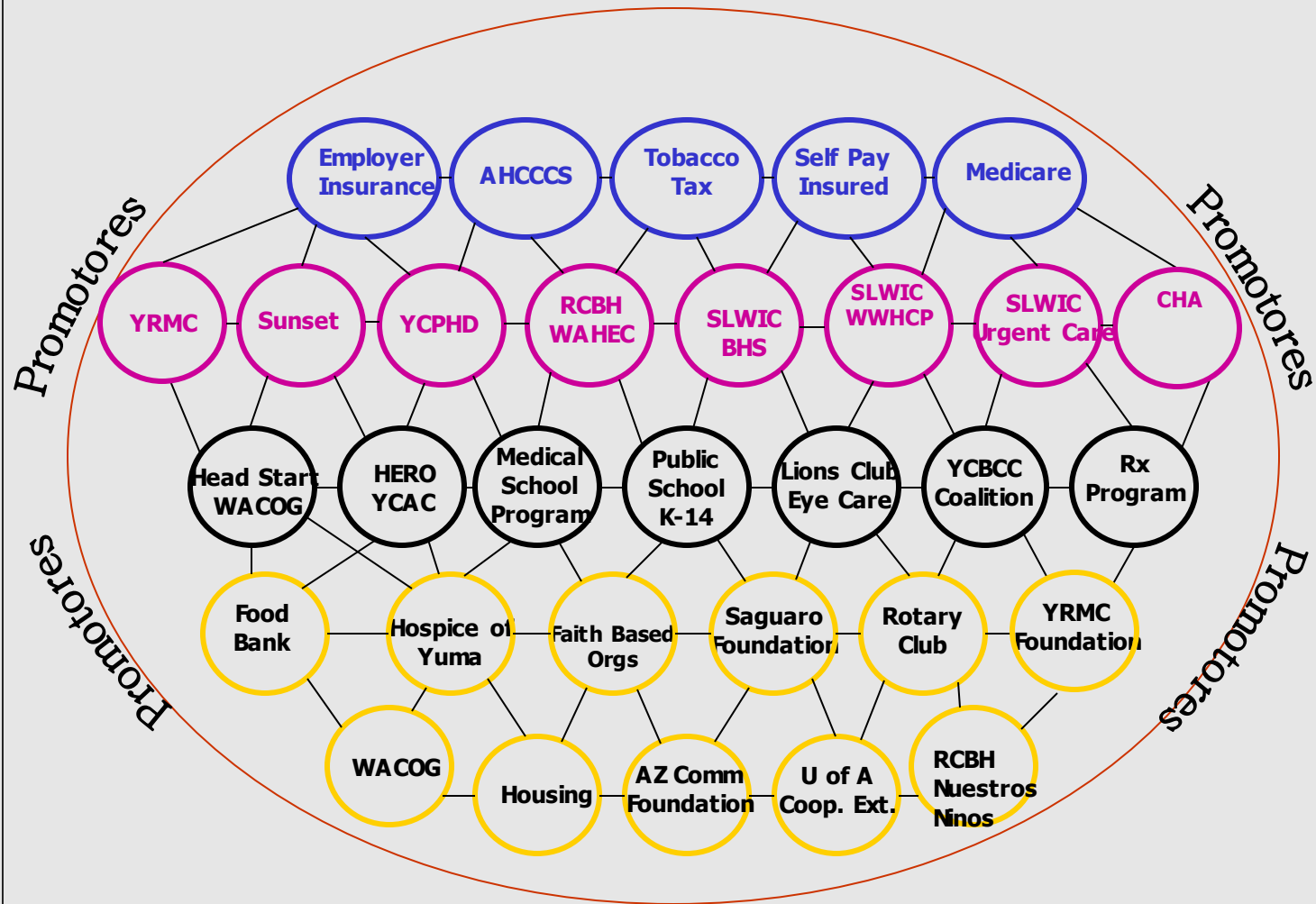
NEXT STEP TO FOLLOW

- Establish a **community outreach program** by working with a cadre of **Promotores de Salud** trained on environmental health education for the prevention of environmental contamination.
- **10,000 elementary school children from both sides of the border.**

Reaching out to Farmworkers



Yuma County Safety Network Addressing SDoH





**“Nuestros Niños” “Our Children”
Community Outreach
Door-to-Door Annual Census Campaign**

- Community Outreach home visits (SDoH) and Children’s Immunization Campaign
- ED and Hospital Discharge and Team coordination
- Environmental Issues

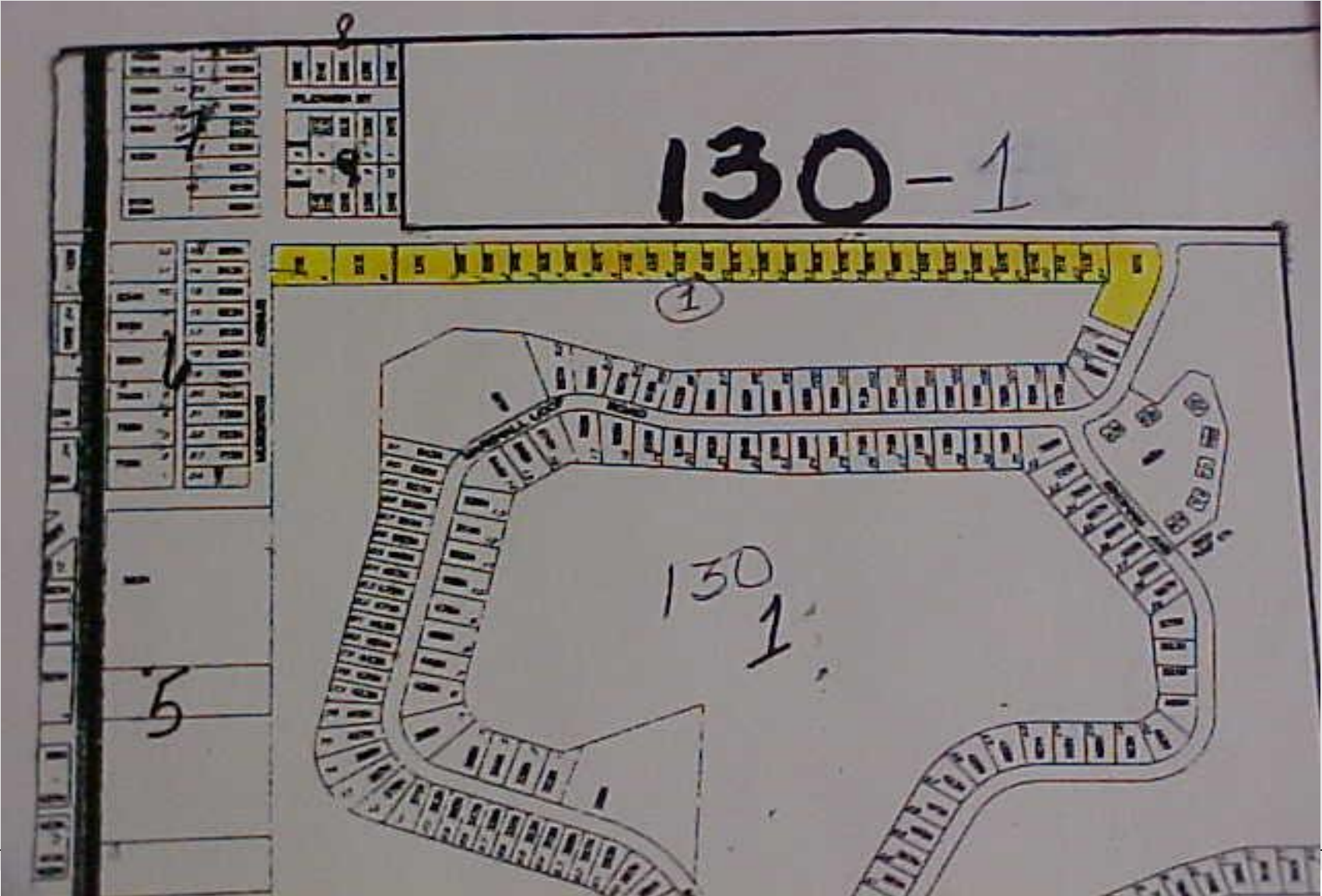
Community Outreach Efforts



“Our Children/Nuestros Niños” Community Health Census and Outreach Campaign

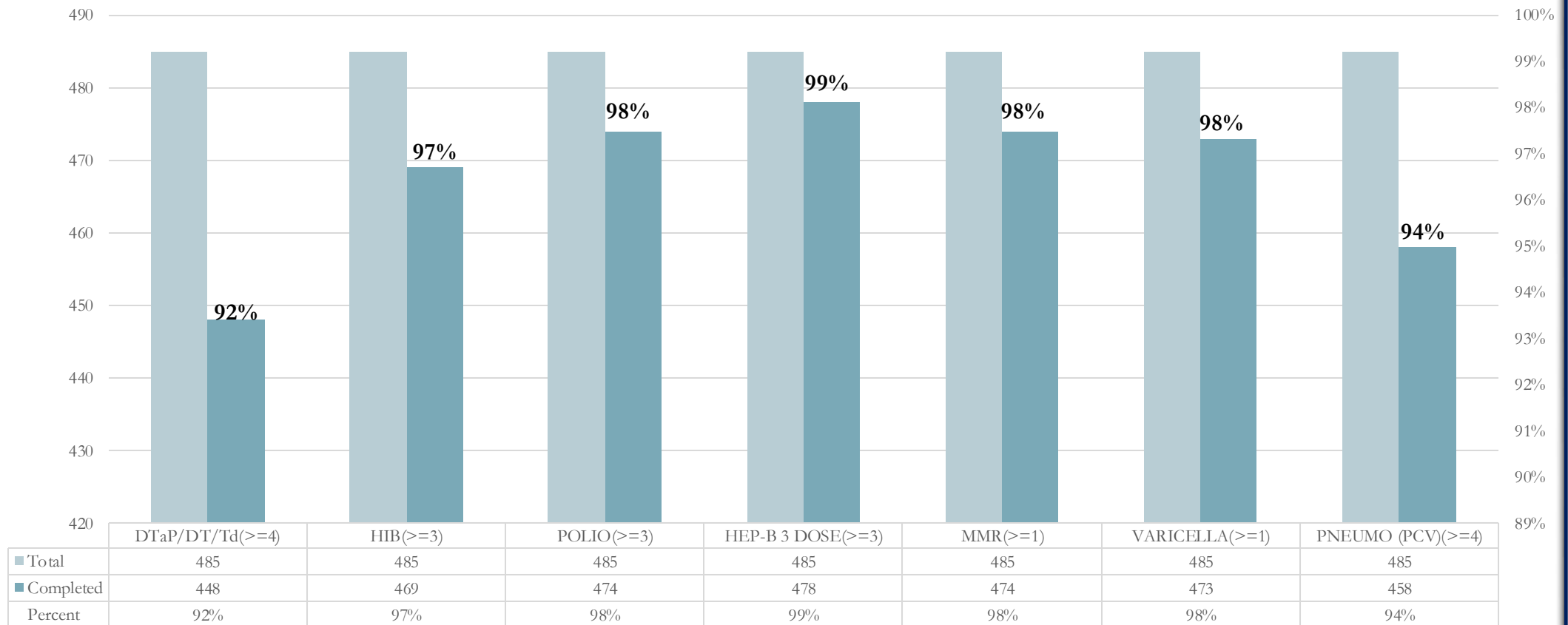
- Identify families in need of social health services, provide referrals and
- and assist the families in accessing services.
- Inform families about the various resources that are available through our agency as well as in the community.
- **Identify children under the age of five with incomplete immunization schedules**
- Identify pregnant women without prenatal care

Somerton, AZ AGEBs (1998) Geo Statistic Basic Area





San Luis Walk-In Clinic, Inc Toddler Immunization Coverage Report





AN INTER-PROFESSIONAL APPROACH TO
COMMUNITY BASED PARAMEDIC PROJECT
ADDRESSING SOCIAL DETERMINANTS

Challenges and opportunities in reaching patients in rural communities



ACCESS TO
INTERNET



USE OF EHR –
PORTAL AND
VIDEO
CONFERENCING
(CLINIC)



I-PHONE WI-FI; DIRECT
ACCESS TO PORTAL IN
CLINIC (SLWIC URGENT
CARE)



TELEHEALTH
EQUIPMENT
(RURAL CLINIC
TO SPECIALTY
CLINICS; PEDS,
IM, OB/GYN,
BHS



CO-LOCATIONS;
SCHOOLS,
MOBILE UNITS,
WORKSITES,
COMMUNITY
HEALTH FAIRS



Mohave



La Paz



Yuma



Kingman, Arizona



Lake Havasu, Arizona



Parker, Arizona



San Luis, Arizona



Somerton, Arizona



Yuma, Arizona



San Luis, Arizona



AZCHER

Arizona Coalition for Healthcare
Emergency Response

Northern and Western Regions
Statewide Logistics Manager
Arizona Coalition for Healthcare
Emergency Response
Arizona Hospital and Healthcare
Association

Operations & Logistics
Specialist
Yuma County Health District
Public Health Emergency
Preparedness & Response



Regional Center for Border Health, Inc Cooling Places in South County, Yuma

San Luis Walk-In Clinic, Inc.	950 Building A and B E. Main St.	Somerton	AZ	85350	M-F 7:00 a.m. - 9:00 p.m. Saturday 9 am to 9 pm. Open Monday to Saturday, and open on Holidays	Y
San Luis Walk-In Clinic & Family Behavior Integrated Health Services	214 W. Main St.	Somerton	AZ	85350	M-F 8:00 a.m. - 5:00 p.m. Closed Weekends and Holidays	Y
Family Behavior Integrated Health Services	1130 E. Main St.	Somerton	AZ	85350	M-F 8:00 a.m. - 5:00 p.m. Closed Weekends and Holidays	Y
San Luis Walk-In Clinic, Inc.	1896 E. Babbitt Ln.	San Luis	AZ	85349	M-F 7:00 a.m. - 6:00 p.m. Closed Weekends and Holidays	Y
San Luis Urgent Care	1233 S. Main St. Suite 1	San Luis	AZ	85349	M-Sat 9:00 a.m. - 9:00 p.m.	Y
San Luis Medical Mall	151 S. Oak Ave	San Luis	AZ	85349	M-F 8:00 a.m. - 5:00 p.m. Closed Weekends and Holidays	Y
San Luis Walk-In Clinic & Family Behavior Integrated Health Services	1453 N. Main St.	San Luis	AZ	85349	M-F 8:00 a.m. - 5:00 p.m. Closed Weekends and Holidays	Y

Humanitarian Response to the US-Mexico Border
Refugees Seeking Asylum in the U.S.
and COVID-19 Emergency



**Hon. Sen. G. Peters visit to
RCBH SLWIC**

(4/28/2021)



**Hon. Secretary Alejandro
Mayorkas,
U.S. Department of
Homeland Security**



**U.S. Customs and
Border Protection**



Regional Center for Border Health, Inc.

Total Refugees Seen 2021-2024

2021		2022		2023		2024	
March - June	1374	January	6241	January	7159	January	7,089
July-September	5010	February	6400	February	4465	February	7,134
October-December	5697	March	8832	March	7062	March	6,343
		April	8910	April	7421	April	4,581
		May	10212	May	9319	May*	2,023
		June	8627	June	4401	June	
		July	9383	July	5490	July	
		August	5977	August	8387	August	
		September	7081	September	8532	September	
		October	6965	October	7983	October	
		November	8062	November	9422	November	
		December	11807	December	11500	December	
TOTAL	12,081	TOTAL	98,497	TOTAL	91,141	TOTAL	27,170
*As of May 17, 2024							
TOTAL 2021-TO DATE		228,889					



**Together With Veterans
Cocopah Indian Tribe
Resource Center**



TOGETHER
WITH VETERANS

RURAL VETERANS SUICIDE
PREVENTION PROGRAM
COCOPAH INDIAN TRIBE

US DEPARTMENT OF VETERANS AFFAIRS
VETERANS HEALTH ADMINISTRATION

WESTERN INTERSTATE COMMISSION FOR HIGHER EDUCATION



PARKER TWV RESOURCE CENTER LA PAZ COUNTY



Binational Clean Air Calendar
Yuma County, Arizona

2024

Calendario Binacional de Aire Limpio
San Luis Río Colorado, Sonora

Our Precious Home - Nuestro Precioso Hogar



Alice Castillo, 11
Desert Sonora Elementary School
Somerton, Arizona





THANK
YOU

Amanda Aguirre

President & CEO

• Amanda@rcfbh.org