

Let's Take a Peek at Performance: Critical Access Hospitals Data to Drive Improvement



Quality Improvement Organizations
Sharing Knowledge. Improving Health Care.
CENTERS FOR MEDICARE & MEDICAID SERVICES



Let's Take a Peek at Performance Critical Access Hospitals

Data to Drive Improvement


7th Annual Performance Improvement Summit for
Arizona's Critical Access Hospitals
August 3, 2012

Charlie A. Chapin, MS, CHCA
Health Services Advisory Group, Inc.
(Arizona's Medicare Quality Improvement Organization — QIO)

Information for Health Care Improvement 

Primary Objectives

- CMS Public Reporting and *Hospital Compare*
 - Tour of the Web site
 - Review the latest national and state results on Pneumonia Quality Measures
- Results from the QIO Clinical Warehouse
 - Using the Data to Measure Improvement
 - Trends in Arizona's CAHs
 - Examining an "Aggregate Services Metric"
 - Developing CAH-Specific Feedback Reports

Information for Health Care Improvement 

http://www.hospitalcompare.hhs.gov/



U.S. Department of Health & Human Services
HHS.gov

Home Manage Your Health Medicare Basics Resource Locator Help & Support

Medicare.gov > Hospital Compare Home

About Hospital Compare | About the Data | Resources | Help

Hospital Compare

Find a Hospital

Location - ZIP Code or City, State (required)
Example: 21244 or Baltimore, MD

Hospital Name - Full or Partial (optional)

Show Hospitals

Compare Other Providers and Plans

In addition to Hospital Compare, you may find the following sites helpful:

- Nursing Home Compare
- Physician Compare
- Home Health Compare
- Studies Facility Compare
- Medicare Plan Finder

Additional Information

- Visit Medicare's Hospital Value Based Purchasing Program page and learn more about future measures.
- View a list of Hospital Compare contacts.
- Accredited this Hospital

Information for Health Care Improvement 

CMS Hospital Compare

Hospital Results


Your search resulted in 46 hospitals available within 200 miles from the center of ZIP Code 85422.

Choose up to three hospitals to compare. So far you have selected:

- ☑ CARONDELET HOLY CROSS HOSPITAL
- ☑ COPPER QUEEN COMMUNITY HOSPITAL
- ☑ COBBE VALLEY REGIONAL MEDICAL CENTER

Viewing 41 - 46 of 46

GENERAL INFORMATION [1]	DISTANCE [2]	HOSPITAL TYPE [3]	EMERGENCY SERVICES [4]
A. BENSON HOSPITAL 408 SOUTH DOTTLEFIELD STREET TULSA, AZ 85002 (918) 306-2281	77.5 Miles	Critical Access Hospitals	Yes
B. CARONDELET HOLY CROSS HOSPITAL 1174 WEST TARGET RANGE ROAD MCCLESSEL, AZ 85423 (520) 295-3000	12.5 Miles	Critical Access Hospitals	Yes
C. NORTHEAST ARIZONA MEDICAL CENTER 2174 WEST OAK AVENUE DOUGLAS, AZ 85607 (520) 344-7951	112.4 Miles	Critical Access Hospitals	Yes

Information for Health Care Improvement 


CMS Hospital Compare

GENERAL INFORMATION [1]	DISTANCE [2]	HOSPITAL TYPE [3]	EMERGENCY SERVICES [4]
C. NORTHEAST ARIZONA MEDICAL CENTER 2174 WEST OAK AVENUE DOUGLAS, AZ 85607 (520) 344-7951	112.4 Miles	Critical Access Hospitals	Yes
D. COPPER QUEEN COMMUNITY HOSPITAL 101 COLE AVENUE BUDDIE, AZ 85603 (520) 430-5383	91.1 Miles	Critical Access Hospitals	Yes
E. NORTHERN COCHISE COMMUNITY HOSPITAL 1011 WEST RIVER ALLER DRIVE WILLOW, AZ 85643 (520) 384-3541	120.5 Miles	Critical Access Hospitals	Yes
F. COBBE VALLEY REGIONAL MEDICAL CENTER 5800 SOUTH HOSPITAL DRIVE COBBE, AZ 85001 (928) 425-3261	198.4 Miles	Critical Access Hospitals	Yes

Viewing 41 - 46 of 46

No far you have selected:

- ☑ CARONDELET HOLY CROSS HOSPITAL
- ☑ COPPER QUEEN COMMUNITY HOSPITAL
- ☑ COBBE VALLEY REGIONAL MEDICAL CENTER

Information for Health Care Improvement 

CMS Hospital Compare

U.S. Department of Health & Human Services
HHS.gov

Home Manage Your Health Medicare Basics Resource Locator Help & Support

Medicare.gov > Hospital Compare Home


About Hospital Compare | About the Data | Resources | Help

PRINT ALL TABS

Hospital Compare

Information is Divided into 7 Tabs (Sections)

General Information	Patient Survey Results	Family & Effective Care	Admissions & Discharges	Use of Medical Imaging	Medicare Payment	Number of Medicare Patients
CARONDELET HOLY CROSS HOSPITAL 1174 WEST TARGET RANGE ROAD MCCLESSEL, AZ 85423 (520) 419-2388						
COPPER QUEEN COMMUNITY HOSPITAL 101 COLE AVENUE BUDDIE, AZ 85603 (520) 430-5383						
COBBE VALLEY REGIONAL MEDICAL CENTER 5800 SOUTH HOSPITAL DRIVE COBBE, AZ 85001 (928) 425-3261						

Information for Health Care Improvement 

Let's Take a Peek at Performance: Critical Access Hospitals Data to Drive Improvement

CMS Hospital Compare

Pneumonia Care

Pneumonia is a serious lung infection that causes difficulty breathing, fever, cough and fatigue. These measures show some of the recommended treatments for pneumonia.

- More information about timely and effective care measures.
- Why pneumonia care measures are important.
- Current data collection period.

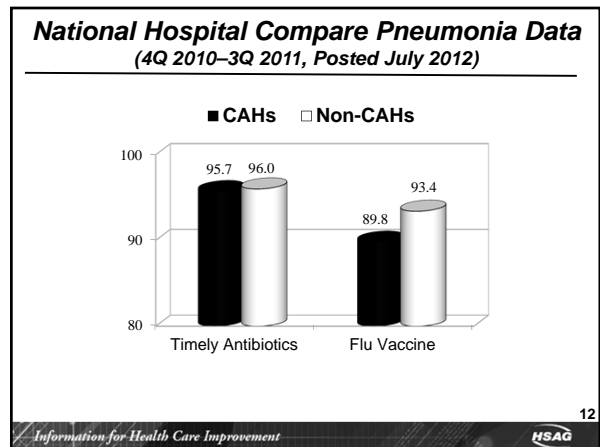
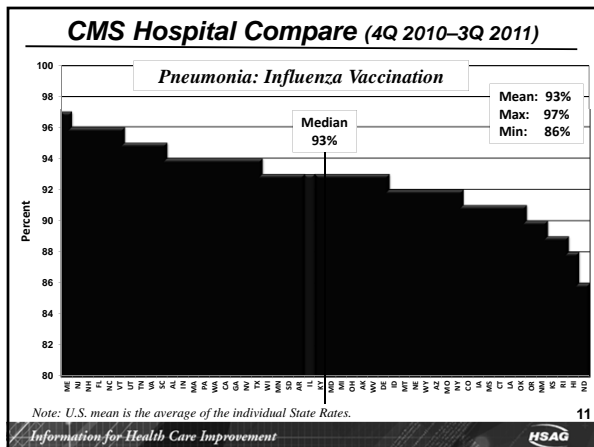
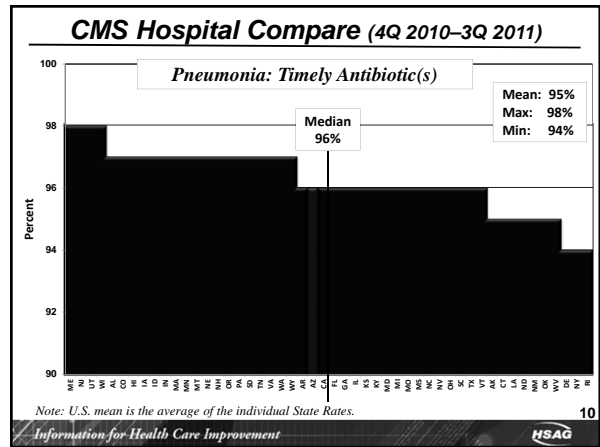
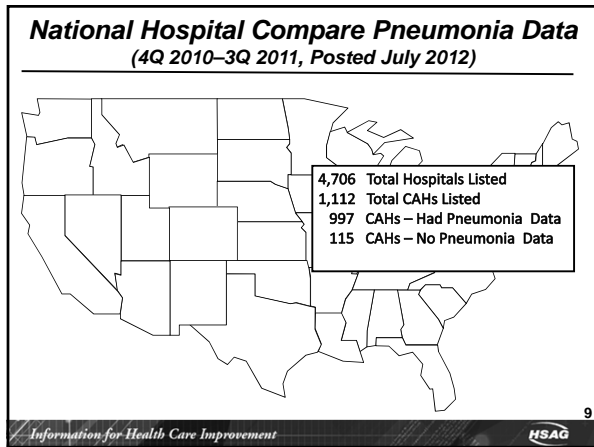
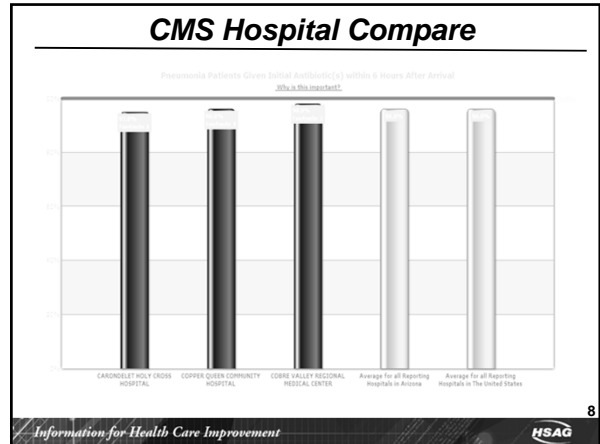
Timely Pneumonia Care

Effective Pneumonia Care

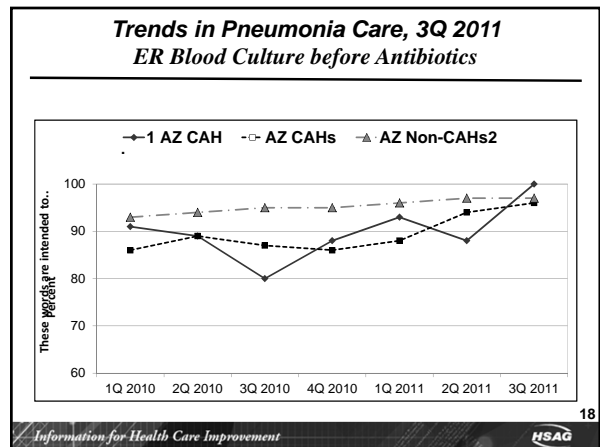
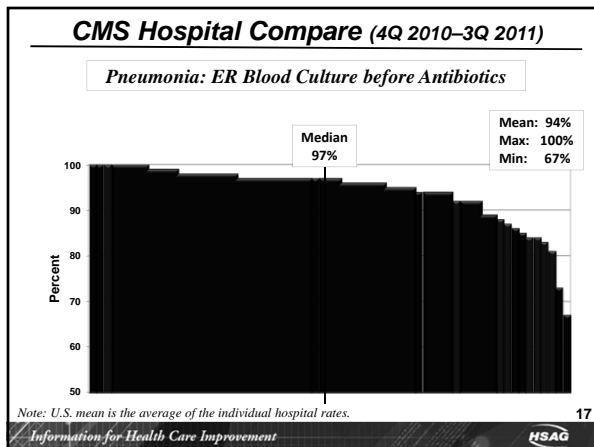
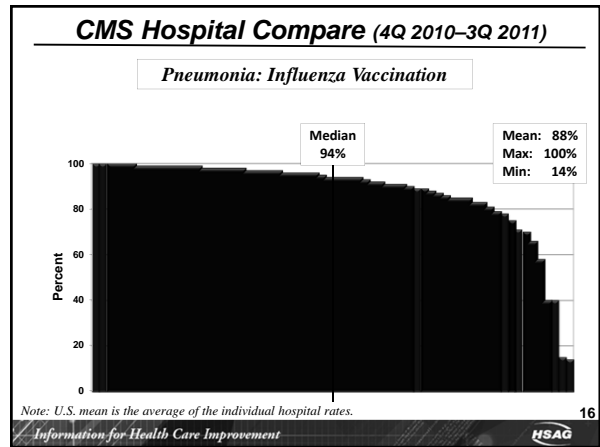
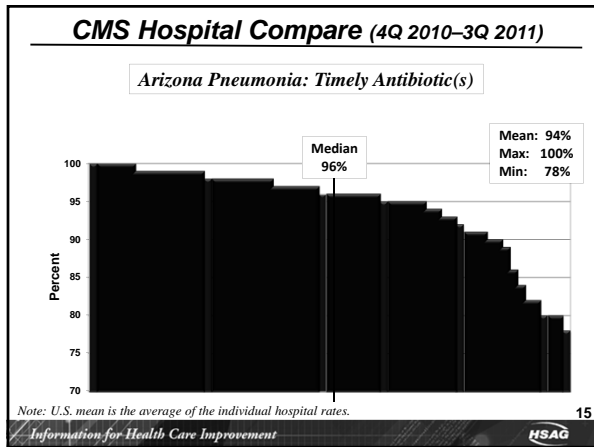
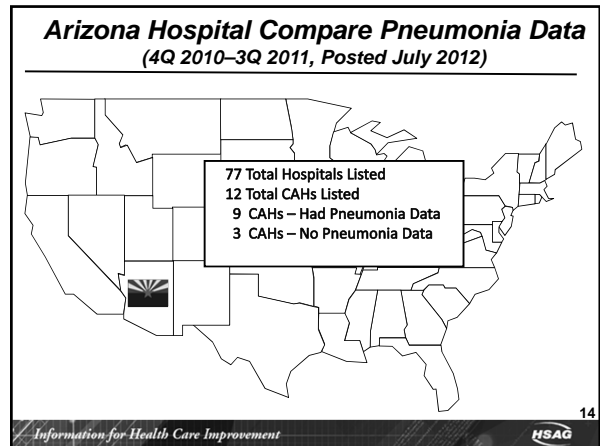
Hospital	Timely Care	Effective Care
CARONDELLET HOLY CROSS HOSPITAL	95% ¹	95% ¹
COPPER QUEEN COMMUNITY HOSPITAL	96% ¹	96% ¹
COBRE VALLEY REGIONAL MEDICAL CENTER	98% ²	98% ²

Pneumonia Patients Given Initial Antibiotic(s) within 6 Hours After Arrival

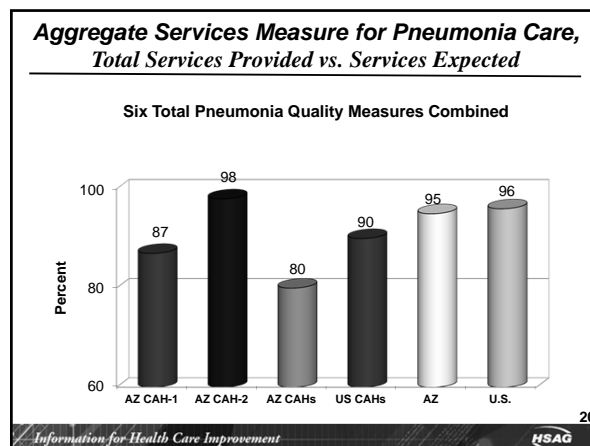
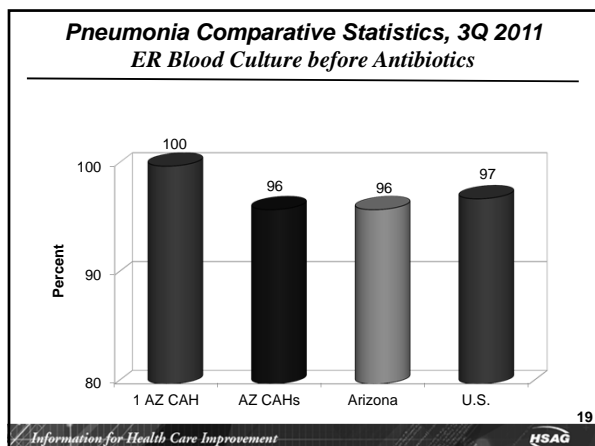
Information for Health Care Improvement | HSAG



Let's Take a Peek at Performance: Critical Access Hospitals
Data to Drive Improvement



Let's Take a Peek at Performance: Critical Access Hospitals Data to Drive Improvement



The Data Behind the Services Measure

Six Pneumonia Quality Measures

- Timely Antibiotic(s) (within 6 hours)
- Appropriate Initial Antibiotic
- Blood Culture in the ER prior to Initial Antibiotic
- Smoking Cessation Advice/Counseling
- Influenza Vaccination
- Pneumococcal Vaccination

21

The Data Behind the Services Measure

Six Total Pneumonia Quality Measures

	Services Provided	Services Expected	Service Rate	Avg. # Eligible Patients per Measure
AZ CAH-1	208	240	86.8	40
AZ CAH-2	48	49	98.0	8
AZ CAHs	531	660	80.4	110
U.S. CAHs	125,995	139,467	90.3	23,245
AZ	36,936	38,785	95.2	6,464
U.S.	2,480,621	2,584,996	96.0	430,833

22

Quality Improvement Organizations
Sharing Knowledge, Improving Health Care.
CENTERS FOR MEDICARE & MEDICAID SERVICES

HSAG HEALTH SERVICES ADVISORY GROUP

Contact Information

Charlie Chapin
(602) 801-6940
echapin@hsag.com

We convene providers, practitioners, and patients to build and share knowledge, spread best practices, and achieve rapid, wide-scale improvements in patient care; increases in population health; and decreases in health care costs for all Americans.

www.hsag.com

This material was prepared by Health Services Advisory Group Inc., the Medicare Quality Improvement Organization for Arizona, under contract with the Centers for Medicare & Medicaid Services (CMS), an agency of the U.S. Department of Health and Human Services. The contents presented do not necessarily reflect CMS policy. Publication No. AZ-1050W-7.4-080212-01

23