



Arizona Center for Rural Health • Mel and Enid Zuckerman College of Public Health • The University of Arizona

## Fast Facts: AzMAT Mentors

The [Arizona Center for Rural Health](#) (AzCRH) contracted with the Arizona Department of Health Services to launch the Arizona Medication-Assisted Treatment mentorship program known as AzMAT Mentors Program. This program connects experienced and new Drug Addiction Treatment Act (DATA)-waived providers to increase their capacity for providing MAT services in Arizona. The goal is to improve access to evidence-based treatments for individuals with opioid use disorders.

### What is MAT?

Medication-Assisted Treatment, or MAT, is a whole-patient practice that uses FDA-approved medications and evidence-based behavioral treatments to care for patients with substance use disorders.

### Arizona MAT Mentoring

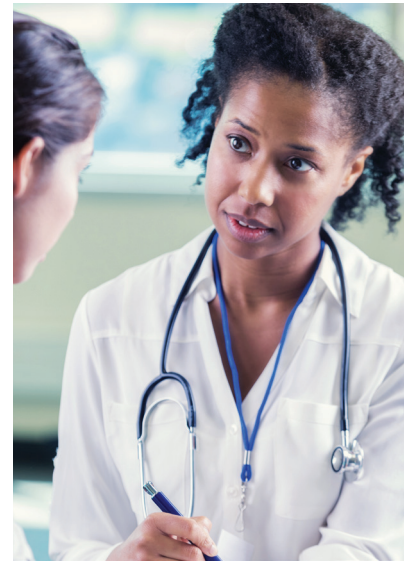
MAT providers are addiction specialists AND non-specialists who receive training through the DATA-waiver process. DATA-waived providers are allowed to prescribe buprenorphine (Suboxone). As of January 2020, there are over 2,100 Arizona DATA-waived providers. Research suggests:

- Many DATA-waived providers are not using MAT to treat their patients with opioid use disorders or are underutilizing MAT
- Commonly reported barriers include lack of time, expertise, and the availability of behavioral health services, and concerns around diversion and patient misuse
- Collaborating with experienced providers is one solution for overcoming these barriers

The AzMAT Mentors Program includes the following activities:

1. Develop an AzMAT Mentors Program training curriculum
2. Recruit and train experienced DATA-waiver providers to collaborate with new MAT providers
3. Match new, DATA-waived MAT providers with experienced providers
4. Document completed training and mentoring activities

This training was supported by Grant number H79T1081709 funded by the Substance Abuse and Mental Health Services Administration. Its contents are solely the responsibility of the authors and do not necessarily represent the official views of the Substance Abuse and Mental Health Services Administration or the Department of Health and Human Services.



### AzMAT MENTORS CONTACTS:

- **Alyssa Padilla, MPH**  
Program Manager  
[alydilla@email.arizona.edu](mailto:alydilla@email.arizona.edu)  
520.626.4439
- **Benjamin Brady, DrPH**  
Evaluator  
[brb99@email.arizona.edu](mailto:brb99@email.arizona.edu)  
520.626.5028
- **Bridget Murphy, M.Ed.**  
Program Coordinator  
[bridget@email.arizona.edu](mailto:bridget@email.arizona.edu)  
520.343.3046
- **Daniel Derksen, MD**  
Director, AzCRH  
[dderksen@email.arizona.edu](mailto:dderksen@email.arizona.edu)  
520.626.3085

<https://crh.arizona.edu/mentor>



THE UNIVERSITY OF ARIZONA  
MEL & ENID ZUCKERMAN COLLEGE OF PUBLIC HEALTH  
**Center for Rural Health**