

Health Information Exchange in Arizona: An Update

August 20, 2013

Melissa Rutala, MPH
Chief Executive Officer
Arizona Health-e Connection



Arizona Health-e Connection (AzHeC)

exists to

Convene, Coordinate and Communicate

for Health Information Infrastructure

improvements that affect every Arizonan

Arizona's HIT and HIE Landscape

- Statewide health information organization
- Operationalizing exchange now – key focus
- Collaboration w/ AzHeC on provider and consumer outreach

**AzHeC
(REC)**

- non-profit, public-private partnership
- Federal EHR adoption grant - \$12 M
- Assisting health care entities with adopting EHRs and HIE
- Promote adoption of e-prescribing
- Lead consumer engagement and education activities
- Lead legislative development, promotion

**HINAz
(HIO)**

**ASET
(State)**

- Federal HIE grant – \$9.4 Million
- Contracting with AzHeC – HIE Marketplace, e-prescribing
- Coordinating state agency activities in health IT
- Funding HINAz to develop statewide HIE infrastructure
- Support consumer education and awareness building

AzHeC Programs & Initiatives

HIT

HIE

★ REC – Helping Arizona providers meet their health IT goals

★ Policy development – leading legislative efforts

★ eRx Initiative – increasing adoption

★ Consumer Outreach - education, awareness & engagement

★ Arizona's Health IT Roadmap 2.0 – 2-3 yr plan for HIT/HIE in Arizona

★ HIE Marketplace – viable HIE solutions for providers

★ HINaz Provider Outreach – Recruitment & Enrollment

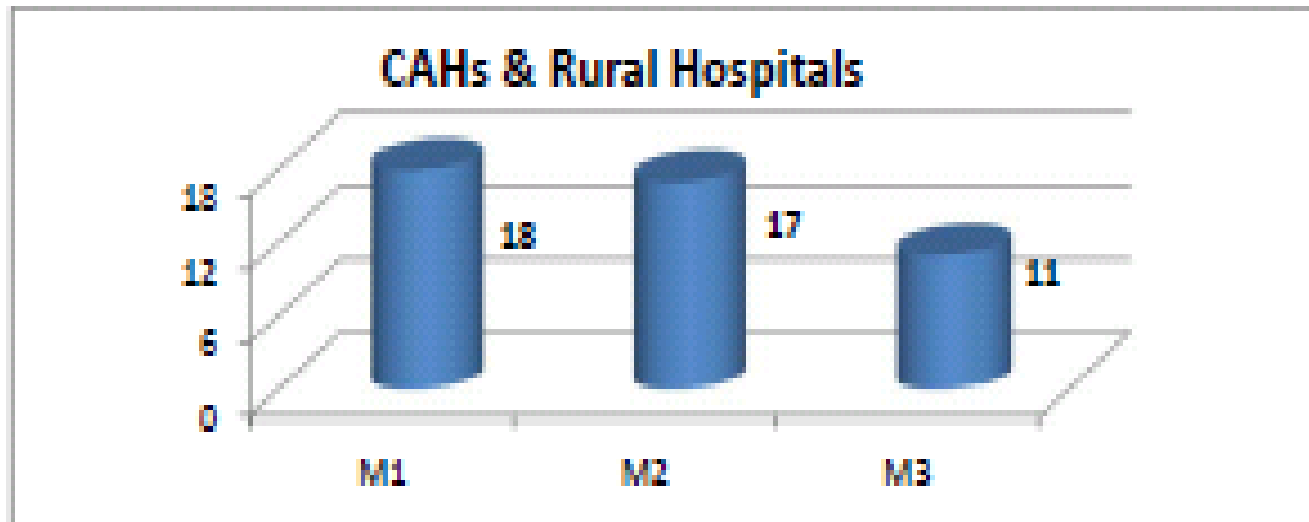
What is the REC?

Arizona's trusted,
unbiased health IT and
Meaningful Use
resource...
assisting over 2,500
Arizona health care
providers and **18 critical
access & rural
hospitals** to achieve
Meaningful Use and
other health IT goals!



REC Progress to Date (CAHs and Rural Hospitals)

CAHs & Rural Hospitals	M1	%	M2	%	M3	%
CAH & RH Members	18	100%	17	94%	11	61%

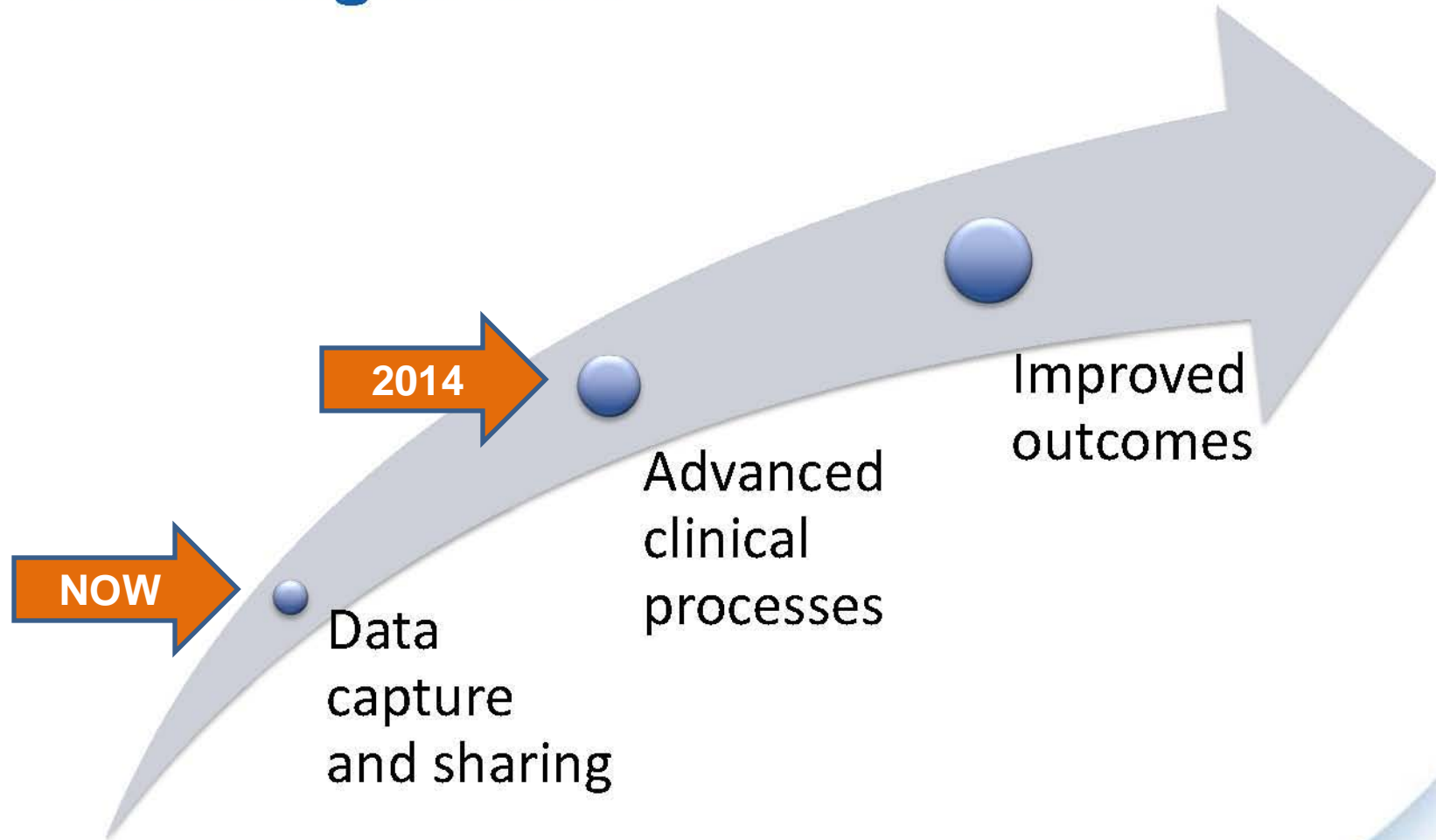


M1 = Sign-up

M2 = Go-Live on
certified EHR

M3 = Stage 1
Meaningful Use

Conceptual Approach to Meaningful Use



Arizona Medicare & Medicaid Payments (June 2013)

- Medicare Eligible Professionals = \$62,869,105 (3,864)
- Medicaid Eligible Professionals = \$47,037,595 (2,167/141)

Total EP Payments = \$109.9 Million

- Medicaid Eligible Hospital = \$4,580,961 (2)
- Total Dually Eligible Hospitals = \$151,885,780 (43/34)

Total EH Payments = \$156.5 Million

TOTAL AZ PAYMENTS = \$266.4 MILLION

Meaningful Use Stage 2: Objectives related to HIE

1. Patients ability to access information
(view, download, transit – VDT)
2. Care summaries for transitions of care
3. Electronic immunization submission
4. Electronic reportable lab results submission
5. Electronic syndromic surveillance data submission
6. Cancer & specialized registry data submission
7. E-prescribing
8. Structured lab reports
9. And More...

Meaningful Use Stage 2 and HIE

- How do HIEs provide support for Meaningful Use Stage 2 requirements?
 - Transition of care – CCD query/response, Direct messaging
 - Public health reporting – immunization, syndromic surveillance, etc.
- Changing standards nationally impacts HIE
- Various options to meet HIE requirements
 - Direct messaging
 - eHealth Exchange & Healthway (formerly NwHIN)
 - Various public health reporting options

AzHeC and HINAz Relationship

- Arizona Health-e Connection (AzHeC) and HINAz have collaborated for years in HIE
- Both organizations have complementary offerings
 - HINAz – HIE technology, onboarding, implementation
 - AzHeC – HIE policy/legislation, education, marketing, outreach
- HINAz currently contracts AzHeC for the following activities:
 - Marketing, communication and outreach
 - Provider recruitment and enrollment
 - Consumer education and engagement (**NEW**)

Consumer Education & Engagement

➤ Key Phases

- Phase 1: Supporting HIE & HINAz
 - Phase 1A: HIE Acceleration via consumer consent implementation toolkit (now – August)
 - Phase 1B: HIE/HINAz community awareness (June – Sept)
- Phase 2: General health IT community awareness (Aug – Dec)

➤ Key Activities

- Consumer consent implementation toolkit
- Consumer Connections Taskforce
- Template consumer education materials
- Consumer-focused health IT/HIE website
- Public relations campaign

Arizona's Health IT "Roadmap 2.0"

- Develop a 2014 – 2016 strategic plan and roadmap for HIT/HIE in Arizona
- The Roadmap will show how Arizona will enable sustainable HIT/HIE across multiple providers to:
 - ✓ improve patient safety,
 - ✓ improve health care quality, and
 - ✓ decrease health care costs.
- Create "mini" HIT roadmaps for:
 - ✓ Public Health
 - ✓ AHCCCS
 - ✓ HINAz



Moving Towards the Future of Healthcare in Arizona



Vision

*Arizonans will experience
an improved quality of health
enabled by robust
health information technology
and exchange.*



Project Mission

*Determine the Roadmap
for Arizona to establish
effective, efficient
health information technology
and exchange.*

Better Care  Better Quality  Lower Cost

What will Roadmap 2.0 Contain?

The Roadmap 2.0 will be a written report that contains:

- Arizona's **vision** for health care
- List of Arizona's **objectives** to reach the vision
- The **capabilities** that need to be in place to achieve the Vision
- Infrastructure components to **enable** the capabilities
- **Initiatives** to develop and implement the required infrastructure components (with a focus on health IT initiatives)
- Recommended next actions for Arizona health care stakeholders



Roadmap 2.0 Timeline

	June	July	August	Sept	Oct	Nov	Dec
Public Health & Medicaid Pre-Workshops June 11-12	★						
Executive Council Meetings	★	★		★	★		
Project Kick-Off Meeting June 24	★						
Envisioning Workshops July 22 – Aug 2		▭					
Healthcare Stakeholders Survey			▭				
General Stakeholder Meetings				★			
AzHeC Summit Sept 10 - 11				★			
Release Final Roadmap Early December						★	

Arizona
Health-e
Connection

*Advancing health and wellness
through information technology*

Annual Summit & Trade Show

WESTERN STATES

Health-e
Connection

SUMMIT AND TRADE SHOW

Meaningful Connections:

Patient Engagement, Interoperability & Collaborative Care

An Arizona Health-e Connection Event
in collaboration with AMIA, AzHIMA and AzHIMSS

September 10 & 11, 2013
Phoenix Convention Center

Visit <http://www.azhec.org/?page=Summit> to Register TODAY!

Want to Get Involved or Learn More?

Contact Us!

Arizona Health-e Connection

www.azhec.org

info@azhec.org

Arizona Regional Extension Center

www.arizonarec.org

ehr@azhec.org

602-688-7200

melissa.rutala@azhec.org

Rural Health and HIE

K Bharathan
Executive Director
20 August 2014

- Patient in ED
- CAH does initial workups
- Patient needs move to tertiary hospital
- Patient transported out
- *If PHI is sent ahead electronically, a bed can be readied before arrival*
- *-> better care, very possibly lower cost*

- Patient returns from tertiary hospital
- *If discharge summary is sent ahead to PCP and/or to CAH*
- *Continuity of care can be maintained*
- *Better care, better outcomes, possibly lower cost*

- Is a State-wide HIE for Arizona
- It is a non-profit with representation from
 - Hospitals (65% of all beds in the State)
 - FQHCs
 - Health Plans (65% of covered lives)
 - A Reference Lab
 - Consumer Advocates
 - Local and State Government Agencies
 - Business leadership

- Current participation includes 33 entities:
 - 11 hospitals, including 4 CAHs
 - 7 health plans
 - 3 community health centers
 - 1 reference lab
 - 7 clinics
 - 3 long term care facilities
 - 1 county corrections department

- Banner Health
- Maricopa Integrated Health System
- Tucson Medical Center
- Carondelet Health Network
- Northern Arizona Healthcare
- Pima County Corrections
- El Rio Health Center
- **Wickenburg Community Hospital**
- Villa Maria Care Center
- **Benson Hospital**
- Genesis Ob/Gyn
- Yuma Regional Medical Center
- Casa Grande Regional Medical Center
- **Little Colorado Medical Center**
- **Copper Queen Community Hospital**
- Sonora Quest Laboratories
- UnitedHealthcare
- Blue Cross Blue Shield of Arizona
- Care1st Arizona
- AND MORE!

- Medication history
- Discharge summaries
- Lab and Rad reports
- Admission/Discharge/Transition (ADT) Reports

➤ Data suppliers status:

- Banner Health – fully live
- Carondelet Health Network – fully live
- Sonora Quest Laboratories – fully live
- Benson Hospital – fully live
- Maricopa Integrated Health Systems – mostly live
- Multi-Specialty Interdisciplinary Clinics (Children’s Rehabilitation Services) – partially live
- Cardiovascular Consultants – partially live

➤ Data users status:

- Pima County Detention Center

- Marketing, outreach and recruitment
- Consumer education and engagement
- ASET/HINAz contract
 - Master patient index
 - Record locator service
 - Provider directory
 - Privacy & security assessment
- Meaningful Use Stage 2
- Coordination with IHS, ASET Unconnected & Enterprise grantees, BHINAz, MMIC, ADHS
- Roadmap 2.0 project

➤ **Main components**

- Master patient index
- Record locator service
- Provider directory

➤ **Current status**

- Finalizing deliverables by end of 2013
- Developing future provider directory strategy

➤ **Privacy & security assessment**

- Final report available now
- Closing the gaps related to new HIPAA rules

Contact:

Health Information Network of Arizona

520-309-2944

www.hinaz.org

Kalyanraman Bharathan - kbharathan@hinaz.org

Melissa Rutala - mrutala@hinaz.org

AzHeC/HINAz recruitment team – ehr@azhec.org