



# Community and Academic Collaboration is a Win-Win for Rural Workforce Development

Presented by:

Allen V. Prettyman, Ph.D., FNP-BC, FAANP

Christy Pacheco, DNP, FNP-BC



THE UNIVERSITY OF ARIZONA

College of Nursing

# Discussion of:

- ❖ Rural workforce development resources available at the UA NP program.
- ❖ Strategies to collaborate with the NP program to enhance workforce recruitment and retention
- ❖ An approach for developing a long-term collaborative system with an academic partner that benefits both the community organization and the population it serves.



THE UNIVERSITY OF ARIZONA

College of Nursing



**Nurse Practitioners:**

**234,000**

**solutions to strengthening  
health care for America**

**Patient-centered, accessible, high-quality health care.**

**AANP** | American Association of  
NURSE PRACTITIONERS™

[www.aanp.org](http://www.aanp.org)

The faith that patients have in NP-provided health care is evidenced by the more than **1.02 Billion** estimated visits made to NPs annually.



THE UNIVERSITY OF ARIZONA

College of Nursing

<https://www.aanp.org/press-room/press-releases>

# Connecting the Dots...

UA  
College of  
Nursing

Benson  
Hospital

UA College  
of Public  
Health



THE UNIVERSITY OF ARIZONA

College of Nursing

# College of Nursing - Background

- ❖ Family Nurse Practitioner Program
- ❖ Approximately 50 graduates a year
- ❖ Developing clinical sites
- ❖ Building pool of preceptors
- ❖ Strengthening system for student clinical placements with rural community healthcare organizations



THE UNIVERSITY OF ARIZONA

College of Nursing

# College of Public Health-Background

- ❖ Joyce A. Hospodar, MBA, MPA
  - Manager - Small Rural Hospital Improvement Program (SHIP)
- ❖ The Center for Rural Health (CRH) - serves Arizona through its mission to “improve the health and wellness of rural populations.”
- ❖ The Arizona Small Rural Hospital Improvement Grant Program (AzSHIP). The grant supports 13 small rural hospitals, eleven of the 13 hospitals are federally designated Critical Access Hospitals (25 beds or less, 35 miles or more from another hospital).



THE UNIVERSITY OF ARIZONA  
College of Nursing

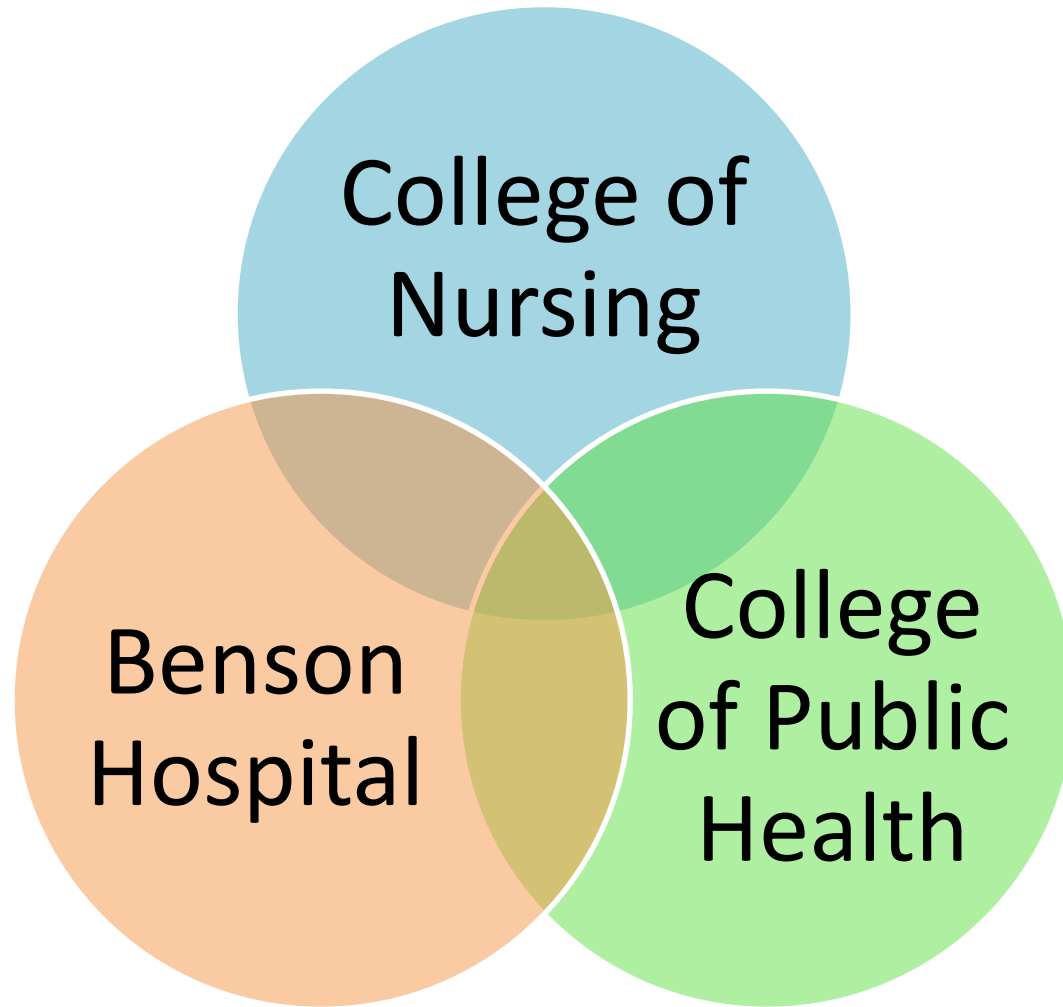


# Benson Hospital - Background

- ❖ Benson Hospital has been serving the San Pedro Valley community since 1960.
- ❖ Expanding Outpatient Services
- ❖ Workforce Development



# Powerful Connection





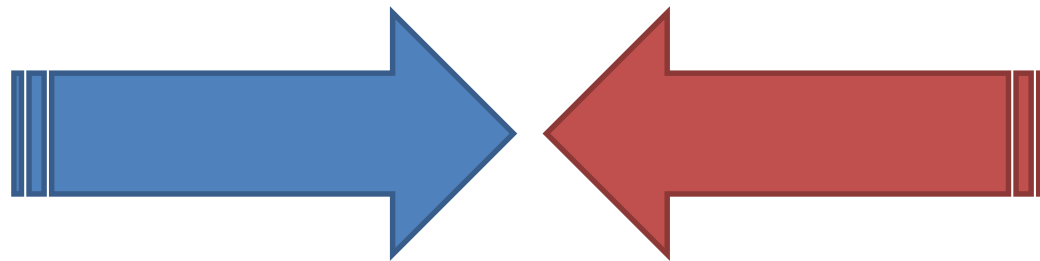
# Collaborative Model

## ❖ College of Nursing

- Ongoing clinical sites
- Long term preceptors
- Preceptor support
- Expertise in rural health
- Large pool of students
- Doctoral Projects

## ❖ Benson Hospital

- Under-utilized clinical site
- Available preceptors
- Rural health clinical expertise
- Developing workforce
- Ongoing quality improvement projects



THE UNIVERSITY OF ARIZONA

College of Nursing

# Model Implemented

Affiliation Agreement



Confirmation of Preceptor



Student Placement



Clinical Rotation



DNP Project



THE UNIVERSITY OF ARIZONA

College of Nursing

# Benefits of Model for UA

- ❖ Ongoing Rural Clinical Site
- ❖ Relationship with preceptor(s)
- ❖ DNP projects for students
- ❖ “Match” students with clinical site



THE UNIVERSITY OF ARIZONA

College of Nursing

# Benefits of Model for Hospital

- ❖ Workforce Development
- ❖ Support for Quality Improvement Projects
- ❖ Staff Development
  - Preceptor training education
  - Preceptor adjunct faculty status
  - DNP committee membership



# Future Goals

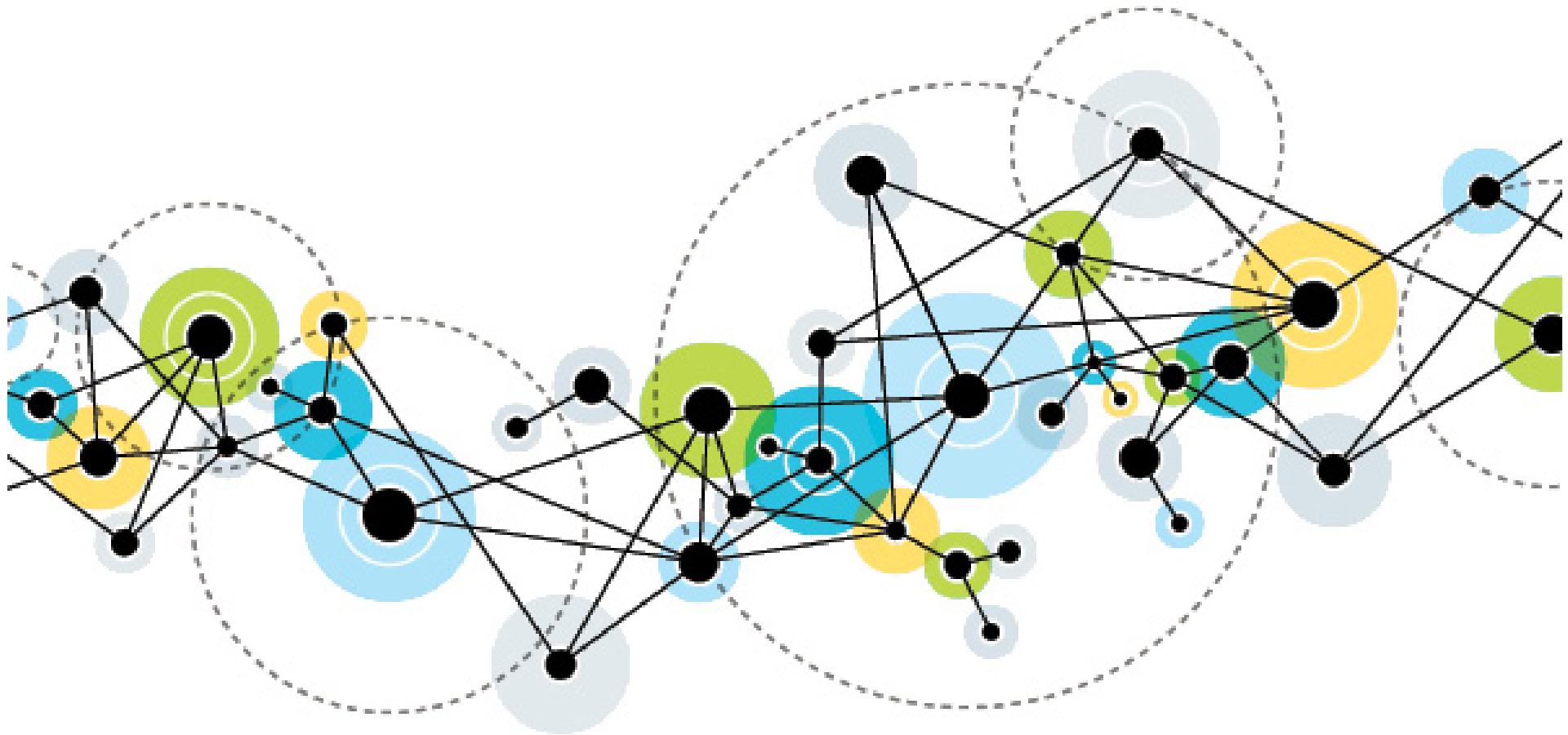
- ❖ Expand Model to other Rural Health Hospitals in Arizona
- ❖ Develop a rural health hospital rotation between multiple rural hospitals for students
- ❖ Develop a rural health fellowship linked to the rural health certificate program.



THE UNIVERSITY OF ARIZONA

College of Nursing

# It's as simple as connecting the dots .....



THE UNIVERSITY OF ARIZONA  
College of Nursing

▲▲▲

# Community and Academic Collaboration:

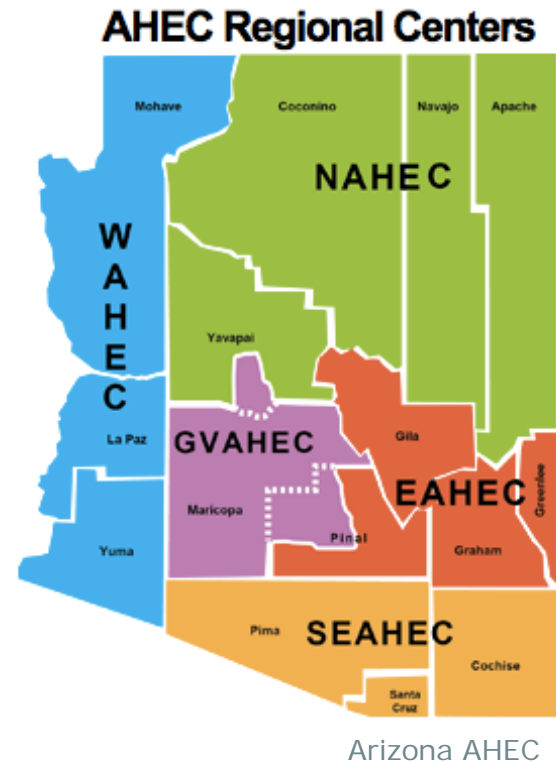
Interprofessional  
RHPP Community Health Fair



THE UNIVERSITY OF ARIZONA  
College of Nursing

# Rural Health Professions Program

- ❖ AzAHEC statewide program
- ❖ Partnership & collaboration
- ❖ Goal: Develop competent, interprofessional healthcare workforce to practice in rural and MUAs across AZ
- ❖ Didactic and clinical experiences



THE UNIVERSITY OF ARIZONA

College of Nursing



# IP RHPP Health Fair: Overview

- ❖ Aims
- ❖ Development
- ❖ Implementation
- ❖ Evaluation
- ❖ Next steps



# IP RHPP Health Fair: Aims

- ❖ Community partnership to maximize limited resources
- ❖ Provide IP service learning
- ❖ Improve community access to care
- ❖ Enhance health literacy
- ❖ Perform local needs assessment



THE UNIVERSITY OF ARIZONA

College of Nursing

# IP RHPP Health Fair: Activity

- ❖ 2 day community health fair
- ❖ Site: Local food center
- ❖ Partners:
  - Local food center
  - NAHEC/NCHC
  - Academic (RHPP, health professions students, faculty)
  - Health department
  - Community clinicians



THE UNIVERSITY OF ARIZONA

College of Nursing

# IP RHPP Health Fair: Process

## ❖ Planning

- Community partnership
- Student engagement
- Scope/Timing/Duration

## ❖ Implementation

- 2 days, end of month, dinner
- Screenings, education, flu shots, needs assessment

## ❖ Evaluation

- Formal and informal



THE UNIVERSITY OF ARIZONA

College of Nursing

# Implementation: Participation

Activity	N
<b>Screenings &amp; Education</b>	
Health Professions Students	
Medicine	4
Nursing	1
Pharmacy	4
Community Clinicians	2
Faculty	2
<b>Needs assessment</b>	
Health Professions Students	
Nursing	1
Pharmacy	3
Faculty	2



THE UNIVERSITY OF ARIZONA

College of Nursing

# Implementation: Screenings & Education

Intervention	N
Blood pressure	35
Blood glucose	30
BMI/Obesity	13
Foot exam	5
Flu shots	2



# Needs Assessment: Survey

- ❖ Interprofessional doctoral project
- ❖ Goal: provide data for site program planning
- ❖ Verbally administered survey: PCAT tool
  - Sociodemographics
  - Health status
  - Access to care: first contact, ongoing care, comprehensiveness
- ❖ IRB approved



THE UNIVERSITY OF ARIZONA

College of Nursing

# Needs Assessment: Key Findings

## ❖ Preliminary (N=10)

### ❖ Clients

- Insured
- Rural/Urban
- Health status: majority with comorbidities
  - Mental health
  - Chronic disease
- Access to care
  - Most would seek care with PCP
  - Significant proportion use ER for routine care
- Limited continuity
- Limited comprehensive care



THE UNIVERSITY OF ARIZONA

College of Nursing



# Evaluation

- ❖ Formal & Informal
- ❖ Overwhelmingly positive: partners, students, clients
- ❖ Health professions students:
  - Continued participation
  - Increased awareness of interprofessional roles
  - Greater appreciation patient perspectives & realities
- ❖ Clients verbalized appreciation



THE UNIVERSITY OF ARIZONA

College of Nursing

# Next Steps

## ❖ Needs assessment

- Aggregate data
- Provide Executive Summary
  - Key findings
  - Recommendations for community services & partnering

## ❖ Continue health fair

- Annual or semi-annually
- Grant pending



THE UNIVERSITY OF ARIZONA

College of Nursing



# Questions



THE UNIVERSITY OF ARIZONA  
College of Nursing